



Ford Transit™

Shelving 148" WB

Standard and Extended Length

Kit 23003574SK and Kit 23003601SK

Contents

<i>Introduction.....</i>	<i>2</i>
<i>Recommended Tools.....</i>	<i>3</i>
<i>Kit Part List for 148" WB Extended Length (EL).....</i>	<i>4</i>
<i>Kit Part List for 148" WB.....</i>	<i>6</i>
<i>Installation Instructions.....</i>	<i>8</i>
<i>Floor Mount and Rail Assembly.....</i>	<i>8</i>
<i>Sidewall Liner Assembly.....</i>	<i>10</i>
<i>T-Stud Installation.....</i>	<i>12</i>
<i>Shelf Installation.....</i>	<i>13</i>
<i>Load Carrying Modification Label.....</i>	<i>15</i>
<i>Revision Control.....</i>	<i>16</i>
<i>Important Notices.....</i>	<i>16</i>

Customer Service

574-848-2073

Monday–Friday 8 a.m. to 5 p.m. Eastern Standard Time Zone

Email: Parts@Utilimaster.com

NOTE: The information in this document is generic. Images and procedures may differ from those for vehicles you are servicing. Because Utilimaster manufactures customized vehicle solutions, this document cannot list and illustrate every possible option for every vehicle. The most common body options are described here. Use this information as a guideline.

Document Part Number: 03104504-N003EN

– Revision B –

Introduction

This document provides instructions for installation of a two rows of fold-up shelving package into the 148" and 148" extended length (EL) wheelbase Ford Transit™ cargo van.

NOTE: Federal Motor Carrier Safety Administration (FMCSA) may require a bulkhead with the installation of cargo shelving.

This manual contains drawings and photos to aid in servicing the vehicle. It may include maintenance information on some items installed but not manufactured by Utilimaster Corporation. Items such as drivetrain components and certain interior furnishings may be covered by separate manufacturer-supplied information. Information provided here is intended to assist Utilimaster customers and is in no way meant to replace or supersede instructions provided by other suppliers for their products.



Fold-up shelving package

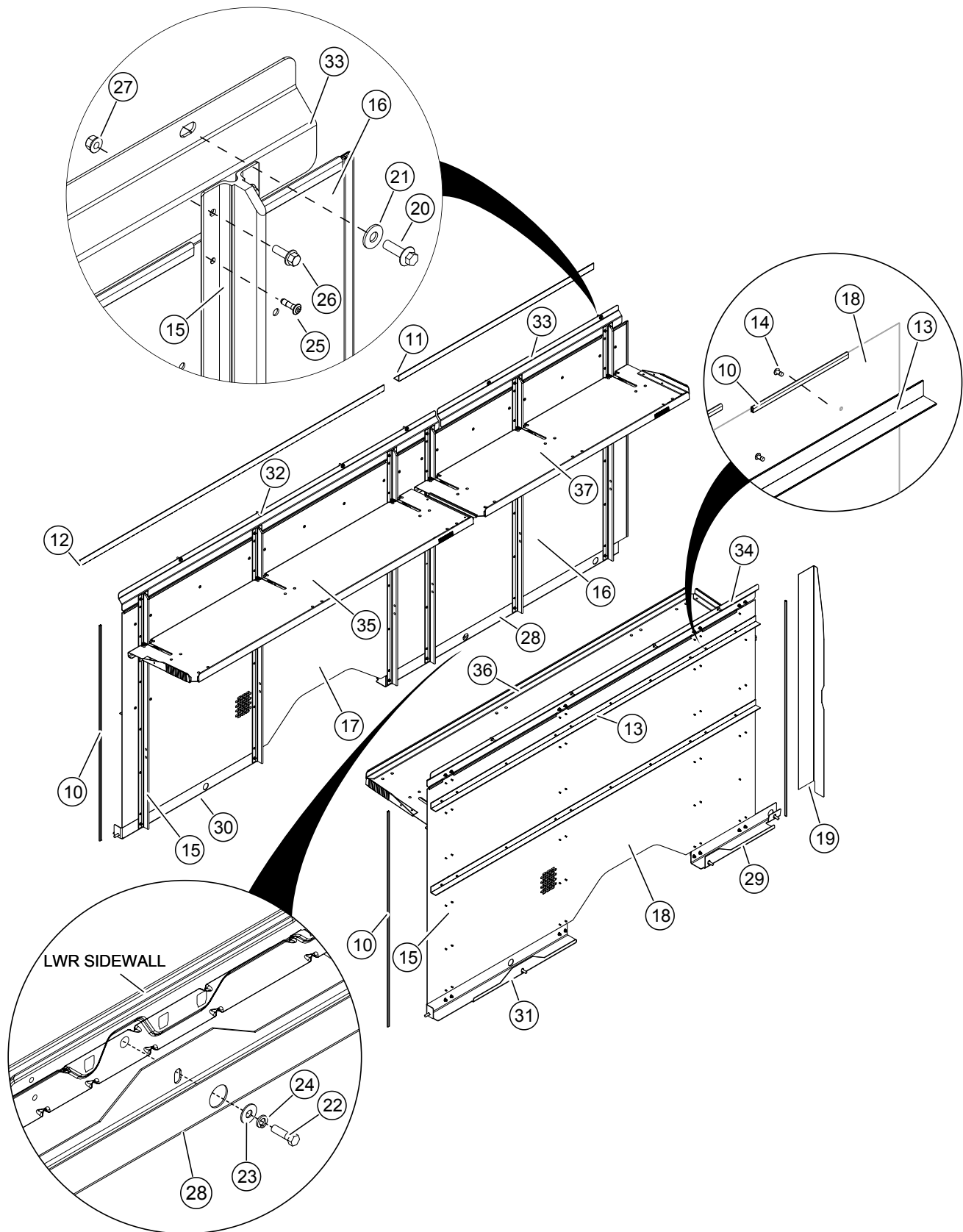
Recommended Tools

Below are some tools that you will need for this process. There may be other commonly used hand tools required but not specifically mentioned.

- Rubber mallet
- Suction cup
- Rivet gun with 1/4" and 3/16" nose piece.
- Drill with F (1/4") and #11 (or 3/16") bits
- Standard and metric combination and ratchet wrench sets
- C-Clamp
- 3/16" Allen wrench
- Guide pin or center punch
- Torque wrench

Kit Part List for 148" WB Extended Length (EL)

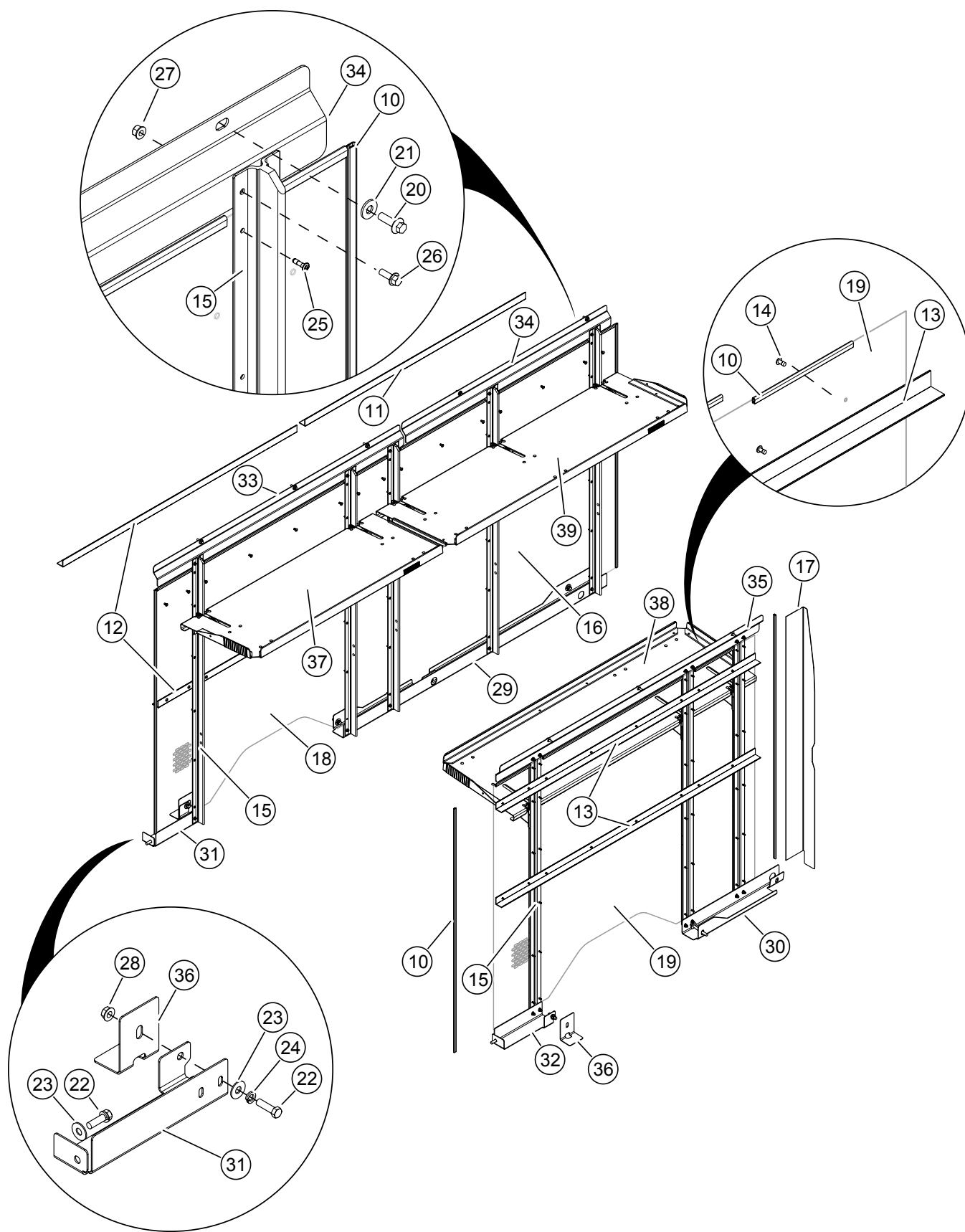
23003574SK-KIT TRANSIT FOLD-UP SHELVING 148" LWB-EL			
BOM ID	Part Number	Description	Qty
	23003574SK	KIT SHELF ASY F/UP LH/RH LWB-EL TRN	1
10	05302302	TRIM LOCK BLK 1/8" W/ALUM	36 ft
11	06002050-05700	ANGLE 57.00	2
12	06002050-08900	ANGLE 89.00	2
13	06002050-09500	ANGLE 95.00	2
14	11400023	MAG-L PRO 1/4 STL	54
15	06939278	T-STUD TRANSIT SHELVING	10
16	06939282	PANEL SIDEWALL LF LWB-EL TRNST	1
17	06939283	PANEL SIDEWALL LR LWB-EL TRNST	1
18	06939284	PANEL SIDEWALL RR LWB-EL TRNST	1
19	06939399	CLOSEOUT SIDEWALL RF LWB-EL TRNST	1
20	UT29-BB1-007	BOLT FLG M8-1.25 x 25 PLK CLS 8.8 BZ	10
21	11000160	WASHER FLAT 5/16 USS SS	10
22	11000173	BOLT HX 7/16-20 X 1.50 GR8 ZN	9
23	11008400	WASHER FLAT 7/16	9
24	11008500	WASHER LOCK 7/16	9
25	11400600	RIVET 3/16 AL	120
26	11600651	BOLT FLG 1/4-20 X .75 GR5 ZN	40
27	11600674	NUT FLG 1/4-20 PTLK GRD F ZN	40
28	22826124	MOUNT LWR T-STUD LF LWB-EL TRNST	1
29	22826125	MOUNT LWR T-STUD RF LWB-EL TRNST	1
30	22826126	MOUNT LWR T-STUD LR LWB-EL TRNST	1
31	22826127	MOUNT LWR T-STUD RR LWB-EL TRNST	1
32	22826128	RAIL UPR T-STUD LR LWB-EL TRNST	1
33	22826129	RAIL UPR T-STUD LF LWB-EL TRNST	1
34	22826130	RAIL UPR T-STUD RR LWB-EL TRNST	1
35	23003577	SHELF FOLDUP ASSY LR LWB-EL TRNST	2
36	23003578	SHELF FOLDUP ASSY RR LWB-EL TRNST	2
37	23003579	SHELF FOLDUP ASSY LF LWB-EL TRNST	2
NS_1	03104504-N003EN	FOLD UP SHELVING INSTALL INSTRUCTIONS	1



*Overview of 148" wheelbase extended length (EL) fold-up shelving package
(LH lower and RH upper shelves not shown for clarity)*

Kit Part List for 148" WB

23003601SK-KIT TRANSIT SHELVING 148" WB			
BOM ID	Part Number	Description	Qty.
	23003601SK	SHELF ASSY FOLDUP LH LWB TRNST	1
10	05302302	TRIM LOCK BLK 1/8" W/ALUM	32 ft
11	06002050-05700	ANGLE 57.00	2
12	06002050-06050	ANGLE 60.50	2
13	06002050-06700	ANGLE 67.00	2
14	11400023	MAG-L PRO 1/4 STL	46
15	06939278	T-STUD TRANSIT SHELVING	8
16	06939282	PANEL SIDEWALL LF LWB-EL TRNST	1
17	06939399	CLOSEOUT SIDEWALL RF LWB-EL TRNST	1
18	06939588	PANEL SIDEWALL LR LWB TRNST	1
19	06939589	PANEL SIDEWALL RR LWB TRNST	1
20	UT29-BB1-007	BOLT FLG M8-1.25 x 25 PLK CLS 8.8 BZ	8
21	11000160	WASHER FLAT 5/16 USS SS	8
22	11000173	BOLT HX 7/16-20 X 1.50 GR8 ZN	9
23	11008400	WASHER FLAT 7/16	9
24	11008500	WASHER 7/16 LOCK ZINC	9
25	11400600	RIVET 3/16 AL	96
26	11600651	BOLT FLG 1/4-20 X .75 GR5 ZN	32
27	11600674	NUT FLG 1/4-20 PTLK GRD F ZN	32
28	11000104	NUT FLG 7/16-20	2
29	22826124	MOUNT LWR T-STUD LF LWB-EL TRNST	1
30	22826125	MOUNT LWR T-STUD RF LWB-EL TRNST	1
31	22826296	MOUNT LWR T-STUD LR LWB TRNST	1
32	22826297	MOUNT LWR T-STUD RR LWB TRNST	1
33	22826298	RAIL UPR T-STUD LR LWB TRNST	1
34	22826129	RAIL UPR T-STUD LF LWB-EL TRNST	1
35	22826299	RAIL UPR T-STUD RR LWB TRNST	1
36	22826300	RAIL UPR T-STUD LR LWB TRNST	2
37	23003604	SHELF FOLDUP ASSY LR LWB TRNST	2
38	23003605	SHELF FOLDUP ASSY RR LWB TRNST	2
39	23003579	SHELF FOLDUP ASSY LF LWB-EL TRNST	2
NS_1	03104504-N003EN	FOLD UP SHELVING INSTALL INSTRUCTIONS	1



*Overview of standard 148" wheelbase fold-up shelving kit
(LH lower and RH upper shelves not shown for clarity)*

Installation Instructions

1. Read and understand all instructions before starting work.
2. Validate the packing slip with the list of parts in the instructions.

Floor Mount and Rail Assembly

NOTICE

The jack is only located in cargo area on vans with passenger seat delete option. See manufacturer's owners manual for more information.

1. Remove (2) fasteners from the jack bracket at the RH lower sidewall and relocate.



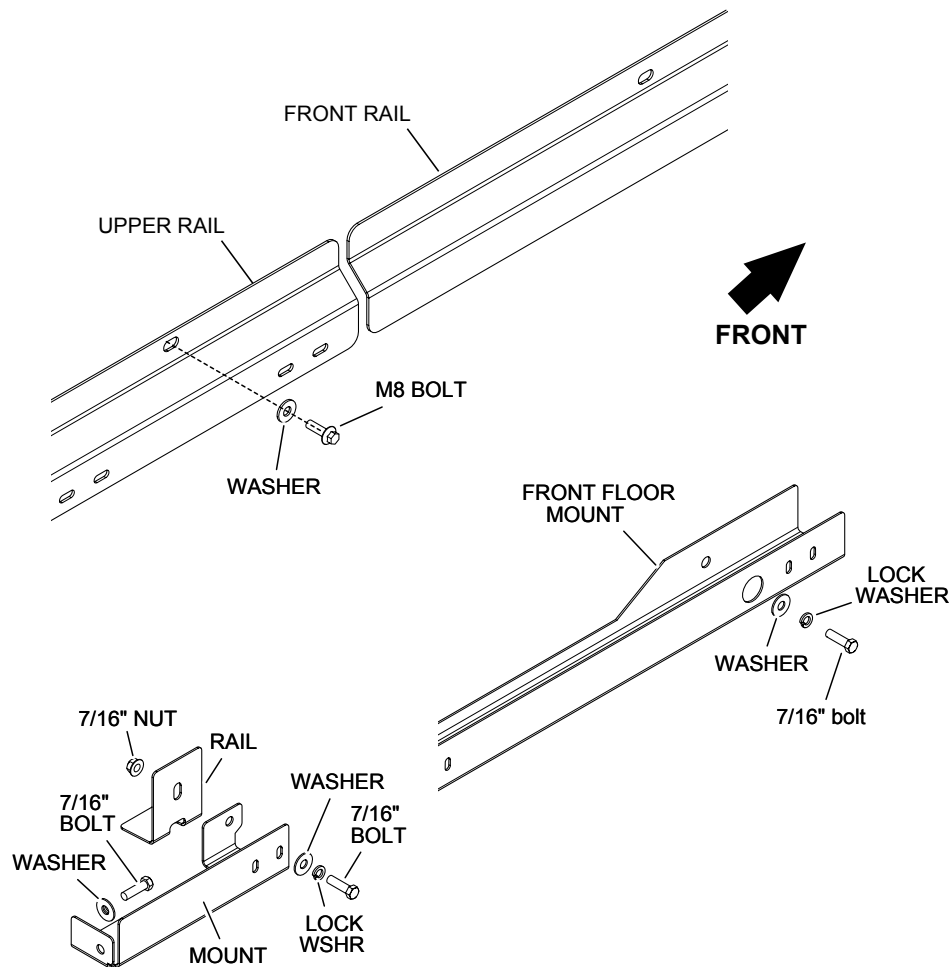
Jack and bracket fasteners

2. Remove D-rings from the LH and RH lower sidewalls.



D-rings on LH lower sidewall

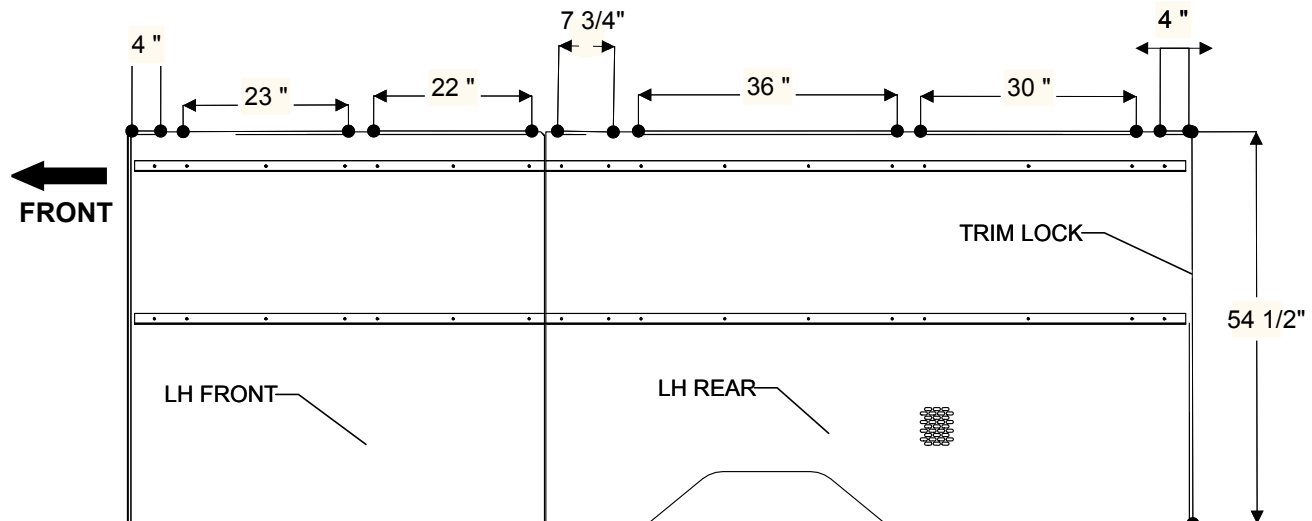
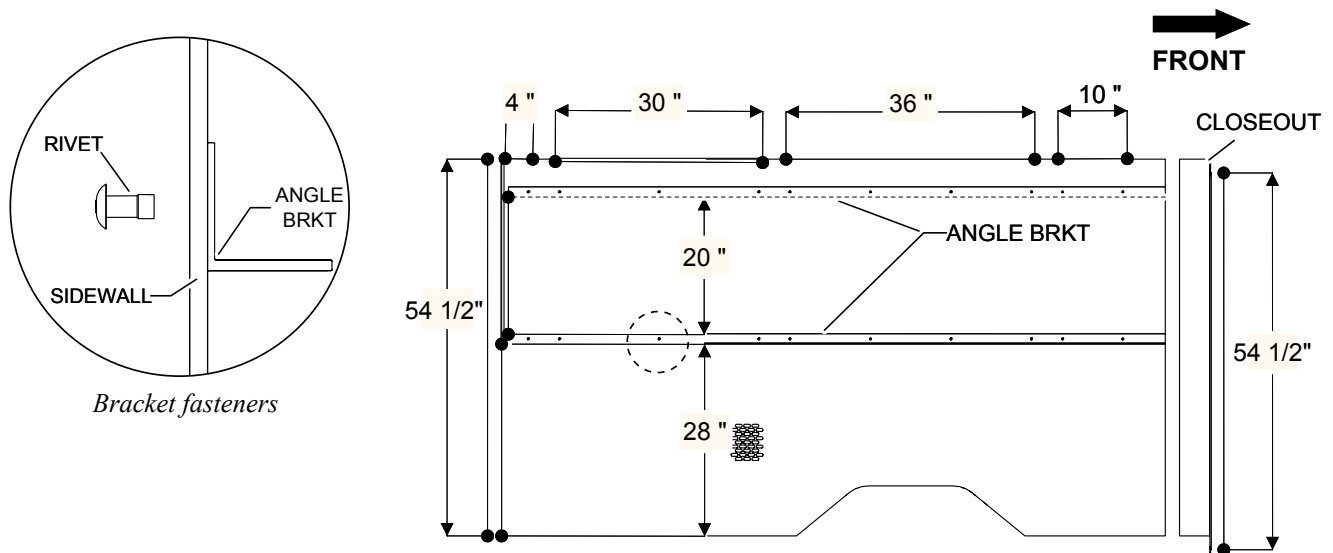
3. Align the holes in the floor mounts to match holes in the sidewall.
4. Use 7/16-20 bolts, lock washers and flat washers to secure floor mounts to the sidewalls.
5. Install upper rails with M8 bolts and flat washers to the sidewalls.



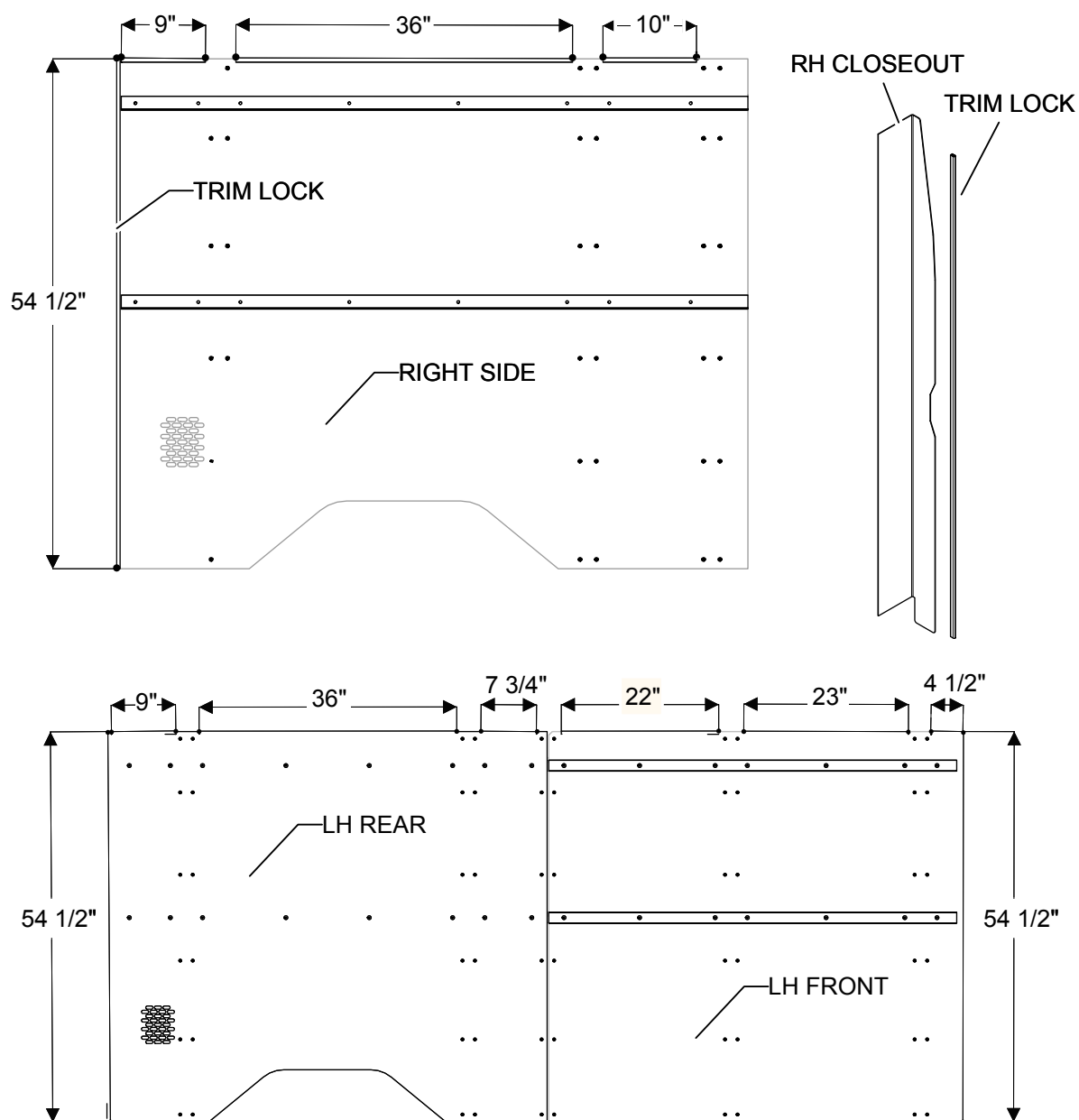
LH sidewall rail and floor mounts (Transit sidewall not shown)

Sidewall Liner Assembly

1. Use existing holes in the sidewall liner as a template to transfer drill holes in the angle brackets.
2. Secure (2) brackets to each sidewall liner using 1/4" rivets.
3. Cut trim-lock to size and attach to the front and rear of each sidewall panel and the closeout panel.



Trim lock dimensions for 148" WB Extended Length sidewall liners



Trim lock dimensions for 148" WB sidewall liners

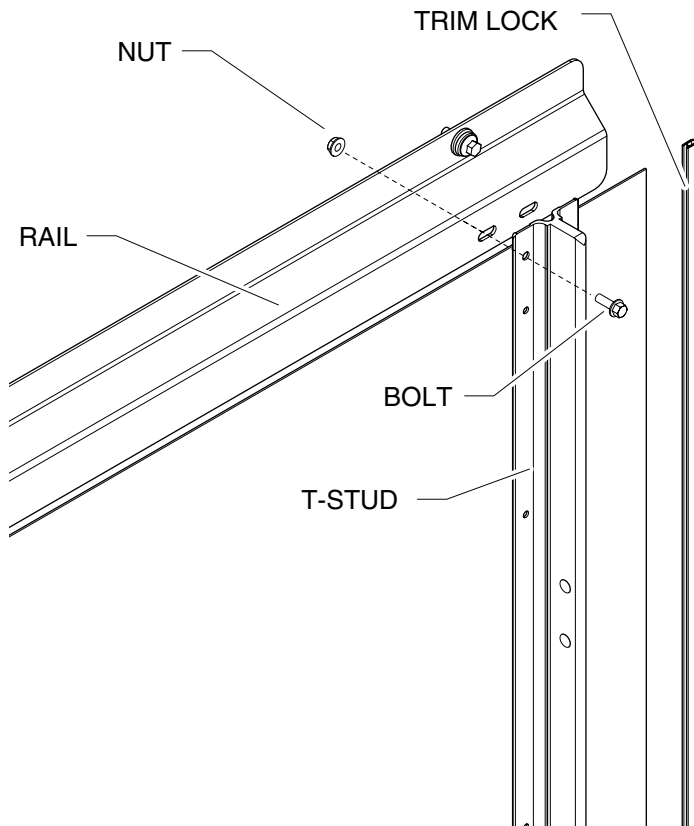
T-Stud Installation

1. Place the sidewall liners on the floor mounts.
2. Position the RH closeout panel at the side cargo door.
3. Align the T-studs with the upper rails and the floor mounts.

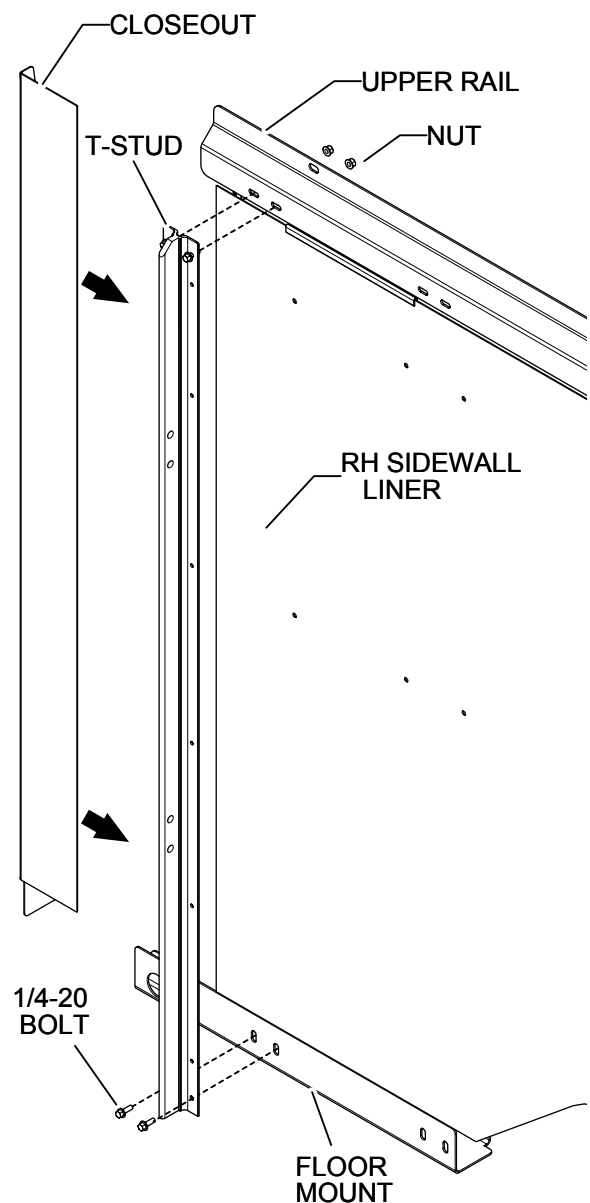
NOTICE

Do not tighten T-stud fasteners until shelving has been installed.

4. Secure T-studs to floor mounts and rails using (4) 1/4-20 x 3/4" bolts and nuts.



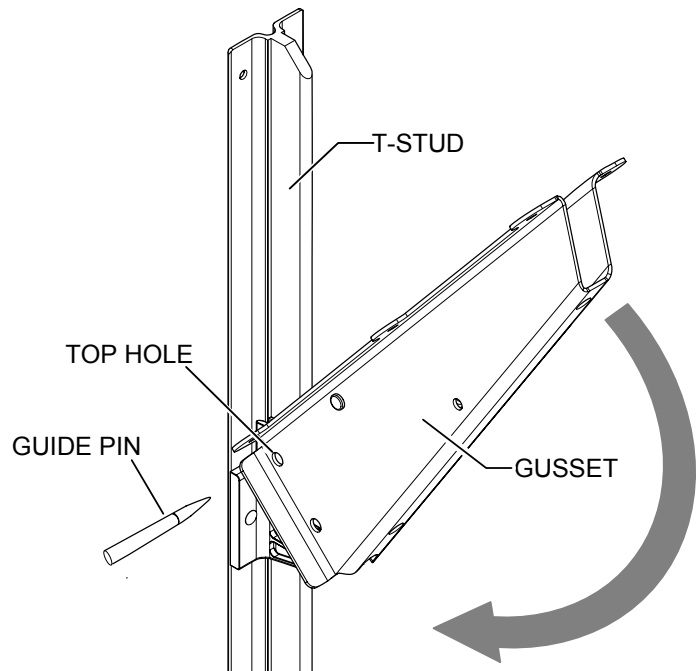
LH sidewall liner and T-stud fasteners



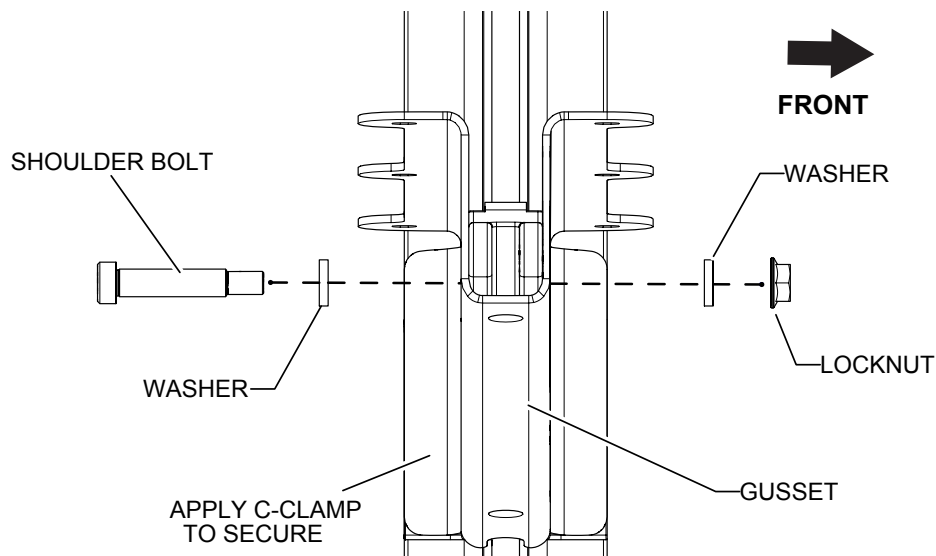
RH closeout panel and T-stud

Shelf Installation

1. Remove the Allen head shoulder bolts and washers from the shelf gussets and set aside.
2. Align shelf gusset assembly on T-studs. Place shelves in the upright position and insert a guide pin through the top gusset hole to align with T-stud holes.
3. Lower shelves into the down position and using a c-clamp secure the gusset to the back of the T-stud.
4. Remove guide pin from top gusset hole. Insert the shoulder bolt with nylon washers on BOTH sides of the gussets and the holes in the T-stud.



Gusset installation (shelves omitted for clarity)



Apply c-clamp and insert fasteners (shelf omitted for clarity)

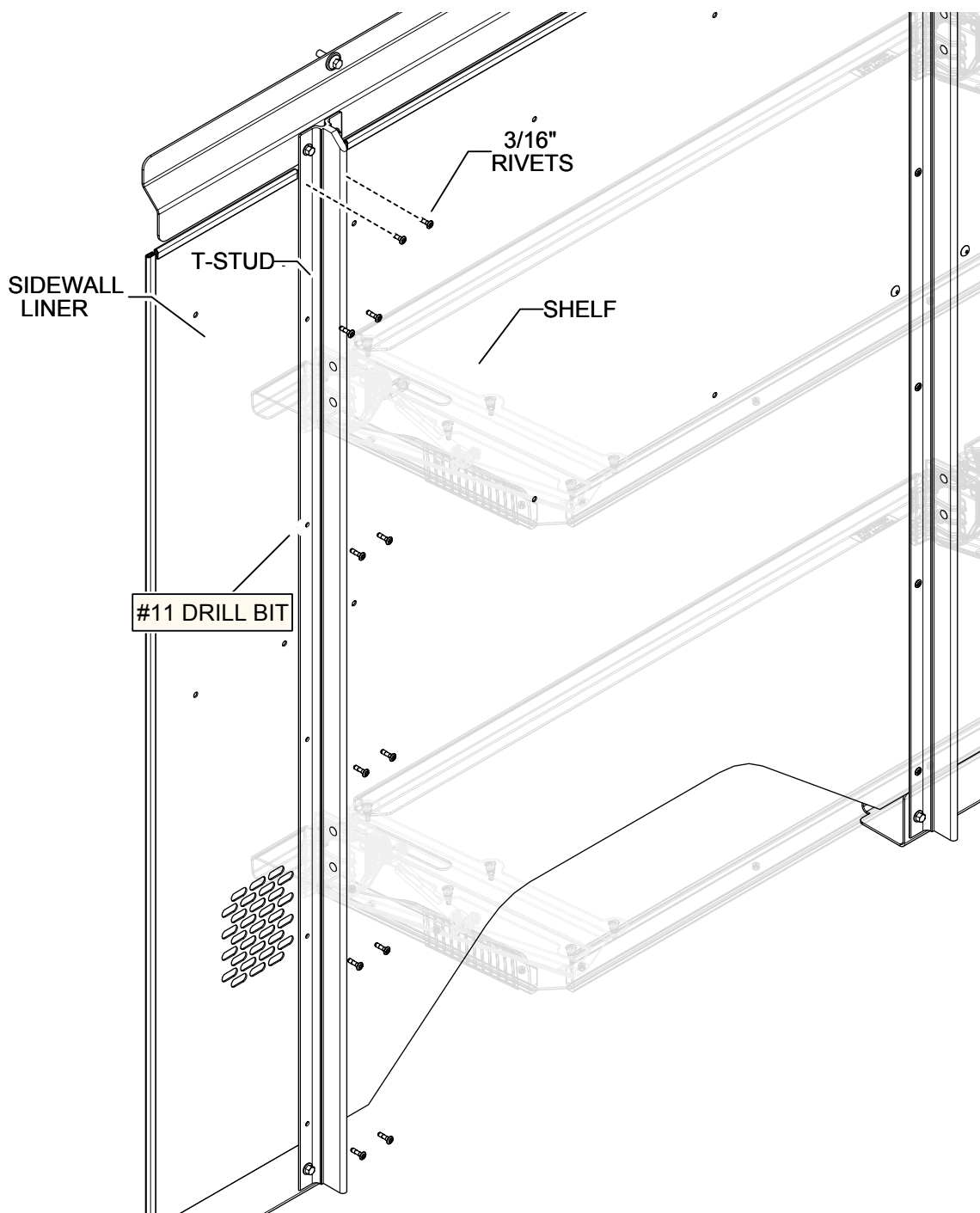
5. Torque the shoulder bolt nuts to 4–6 ft•lbs.
6. Cycle the shelf up and down to check for binding and adjust the T-studs on the mounts as needed.
7. Torque 1/4-20 fasteners on T-studs to 9-11 ft•lb.

8. Use a hand held suction cup lifter to pull sidewall liners tight against T-stud.

NOTICE

Use a drill stop to keep from drilling through the exterior sidewall panel.

9. Use an #11 bit and the holes in the T-stud to transfer drill (12) holes in the sidewall panel.
10. Secure each T-stud with (12) 3/16" rivets.
11. Repeat process on remaining T-studs.



Rivets secured to T-studs and sidewall liner.

Load Carrying Modification Label

1. Fill out and apply the Load Carrying Modification Label as required.

NOTICE

Load Carrying Modification Label may be required to satisfy the statutory requirements for labeling contained in Title 49 of the United States Code, Chapter 5 (Motor Vehicle Safety) and regulatory requirements contained in 49 CFR Parts 567 (Certification) and 568 (Vehicles Manufactured in Two or More Stages). A person who alters a vehicle that previously has been certified in accordance with 49 CFR 571.110 may require an altered certification obligation. Altered certification regulations cover all manufacturing performed after the vehicle has been certified in the final stage and before the first purchase of the vehicle in good faith for purpose other than resale. If you have any questions regarding labeling requirements or need to order labels, call NTEA at 1-800-441-6832.

Revision Control

Document Part Number: 03104504-N003EN

Revision: B
Revision: A

January 2017
July 2014

Important Notices

© 2017, Utilimaster Corp.®

Title: *Transit—Fold-Up Shelving 148" Wheelbase*

Utilimaster Corporation attempts to provide information that is accurate, complete, and useful. All information contained in this manual is based on the latest product information available at the time of publication. However, because of the Utilimaster policy of continual product improvement, Utilimaster reserves the right to amend the information in this document at any time without prior notice.

This material is confidential and the property of Utilimaster. It is shared with your company for the sole purpose of helping you with the operation of the described equipment.

Utilimaster makes no warranty of any kind with regard to this material, including, but not limited to, the implied warranties of merchantability and fitness for a particular purpose. Utilimaster shall not be liable for errors contained herein or for incidental or consequential damages in connection with the furnishing, performance, or use of this material.

Utilimaster expressly disclaims all responsibility and liability for the installation, use, performance, maintenance, and support of third-party products. Customers are advised to make their independent evaluation of such products.

No part of this document may be photocopied, reproduced, or translated to another language without the prior written consent of Utilimaster.

Utilimaster® is a registered trademark of Spartan Motors USA, Inc.

Browse our web site www.utilimaster.com for more information about Utilimaster and its products.