

UTILIMASTER **REACH**TM

Body Operator's Guide



NOTE: Optional equipment shown.



Do not discard! This document contains important operation, safety, and maintenance information!

Introduction

Congratulations on operating a quality Reach vehicle with a Utilimaster® body. Utilimaster is dedicated to serving our customers' needs through the excellence of our products, services, and information. Please read and follow the instructions in this document for safe and optimal operation and maintenance of this vehicle.

This Operator's Guide provides **basic** operating information for the Reach vehicle bodies built by Utilimaster Corporation. For information on chassis and drive train operations, see the *Isuzu's NPR Stripped Chassis Owner's and Driver's Manual*.

This guide also describes how to maintain the vehicle body, avoid injury or vehicle damage, and includes the warranty statement.

Please keep this important document in the vehicle for reference. If the vehicle is ever sold, please leave this document in the vehicle for the next owner.

Utilimaster Corporation attempts to provide accurate, complete, and useful information. All information contained in this manual is based on the latest product information available at the time of publication. However, because of the Utilimaster policy of continual product improvement, Utilimaster reserves the right to amend the information in this document at any time without prior notice.

Reach Customer Service
Toll Free 866-441-9638

Email: reach@utilimaster.com

NOTE: The information in this document is generic. Details in illustrations and procedures may differ from those in this vehicle. Because Utilimaster manufactures customized vehicle bodies, this document cannot list and illustrate every possible option for every vehicle. The most common body options are described. Use this information as a guideline.

Contents

<i>Introduction</i>	2
<i>Notes, Cautions, and Warnings</i>	7
<i>“Before You Go” Inspection Checklist</i>	8
<i>Vehicle Overview</i>	9
<i>Features and Options</i>	11
<i>Accessory Power Outlets</i>	11
<i>Battery Access</i>	12
<i>Brake Fluid Reservoir</i>	13
<i>Bulkhead Wall</i>	13
<i>Clearance and Identification Lights</i>	13
<i>Convenience Panel</i>	14
<i>Driver’s Controls</i>	15
<i>Cruise Control</i>	16
<i>Headlights and Parking Lights</i>	16
<i>Turn Signals</i>	17
<i>Windshield Wiper and Washer</i>	17
<i>Dome and Cargo Lights</i>	17
<i>Doors</i>	17
<i>Keys</i>	17
<i>Bulkhead Door</i>	18
<i>Cab Sliding Doors</i>	18
<i>Latches</i>	19
<i>Non-locking Handles</i>	19
<i>Locking Handles</i>	19
<i>Rear Cargo Doors</i>	20
<i>Rear Swing Doors</i>	20
<i>Rear Roll-up Door</i>	21
<i>Fire Extinguisher</i>	22
<i>Fuel Fill Port</i>	22
<i>Fuse Panels</i>	23
<i>Hazard Light Switch</i>	24
<i>Heater and Air Conditioning Controls</i>	24
<i>Hood</i>	25

<i>Logistic Track</i>	26
<i>Louvers</i>	26
<i>Mirrors</i>	26
<i>Rear Vision (Backup) Camera System</i>	27
<i>Reflective (Safety) Triangles</i>	27
<i>Seats and Seat Belts</i>	28
<i>Adjusting the Driver's seat</i>	28
<i>Passenger's Jump Seat</i>	29
<i>Using the Seat Belt</i>	29
<i>Seat Belt Overview</i>	29
<i>Inspecting the Seat Belt</i>	30
<i>Buckling the Seat Belt</i>	31
<i>Releasing the Seat Belt</i>	31
<i>Stereo Radio with CD Player</i>	33
<i>Windows</i>	33
<i>Sliding Cab Windows</i>	33
<i>Power Cab Windows</i>	33
<i>Windshield Washer Fluid</i>	33
<i>Emergency Repairs</i>	34
<i>Towing the Vehicle</i>	34
<i>Using a Lowboy Trailer</i>	34
<i>Towing from the Front</i>	34
<i>Towing from the Rear</i>	35
<i>Flat Towing</i>	35
<i>Warranty Information</i>	36
<i>What is Covered</i>	36
<i>Body Components</i>	36
<i>Body Structure</i>	36
<i>Service Parts</i>	36
<i>Start Date</i>	36

<i>What is NOT Covered</i>	37
<i>Consequential Damage</i>	37
<i>Other Uses</i>	37
<i>Chassis and Drive Train</i>	37
<i>Tires and Alignment</i>	37
<i>Optional Equipment</i>	37
<i>Paint and Finish</i>	38
<i>Glass</i>	38
<i>Alterations</i>	38
<i>Normal Wear</i>	38
<i>Abuse or Misuse</i>	38
<i>Ignored Damage or Defects</i>	38
<i>Batteries</i>	38
<i>Unauthorized Warranties</i>	38
<i>Other Warranties</i>	38
<i>Returned Parts</i>	39
<i>Sublet Work</i>	39
<i>Filing Warranty Claims</i>	39
<i>Owner's Responsibilities</i>	39
<i>VIN, Body Serial, and Work Order Numbers</i>	40
<i>Reporting Safety Defects</i>	41
<i>United States Only</i>	41
<i>Canada Only</i>	41
<i>Maintenance Information</i>	42
<i>Maintenance Safety Considerations</i>	42
<i>Cleaning</i>	43
<i>General Tips</i>	43
<i>Body Exterior</i>	43
<i>Cargo Area</i>	43
<i>Instrument Panel and Interior Plastic Components</i>	43
<i>Seats</i>	44
<i>Windows</i>	44
<i>Engine and Heater Coolant</i>	45
<i>Lubrication</i>	45

<i>Manufacturers' Recommendations</i>	45
<i>Maintenance Checklist</i>	46
<i>Body Mounting Fasteners</i>	46
<i>Bumpers</i>	46
<i>Doors, General</i>	47
<i>Doors, Roll-up</i>	47
<i>Driver Conveniences</i>	49
<i>Grab Handles and Handrails</i>	49
<i>Hood</i>	49
<i>Mirrors</i>	49
<i>Reflective Tape</i>	49
<i>Seats and Belts</i>	49
<i>Tires</i>	49
<i>Wipers</i>	49
<i>More Information</i>	50
<i>Revision Control</i>	54
<i>Important Notices</i>	54

Notes, Cautions, and Warnings

Reading through this document, you will see NOTES, CAUTIONS, and WARNINGS. Each is there for a specific purpose.

NOTES give you additional information.

CAUTIONS alert you against making an error that could damage the vehicle.

WARNINGS remind you to be careful when there is a risk of personal injury.



When you see this symbol, read this statement first! This alert highlights information that may reduce the risk of personal injury or vehicle damage.

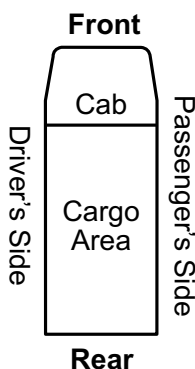


CAUTION: To avoid colliding with another vehicle or obstacle, be sure you always have sufficient overhead and side clearance. Take extra care when backing up.



WARNING: Do NOT drive a forklift inside the cargo area of this vehicle.

NOTE: When calling out part location and corresponding sides of the vehicle, refer to them as “Driver’s Side,” “Passenger’s Side,” “Front,” “Rear,” “Cab,” or “Cargo Area”.



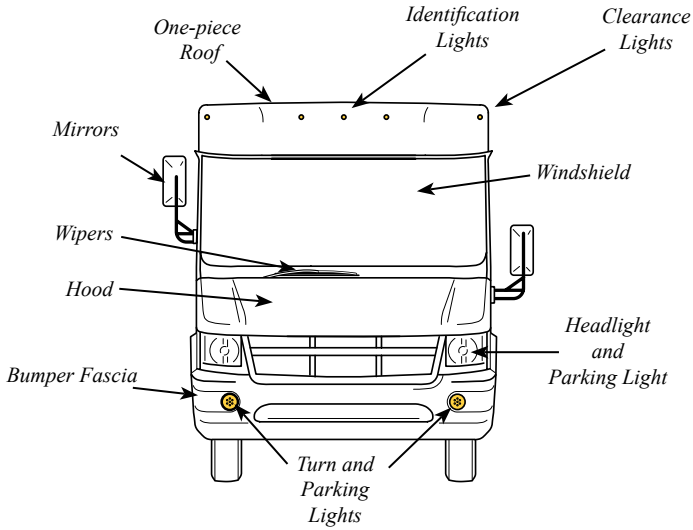
Vehicle orientation

“Before You Go” Inspection Checklist

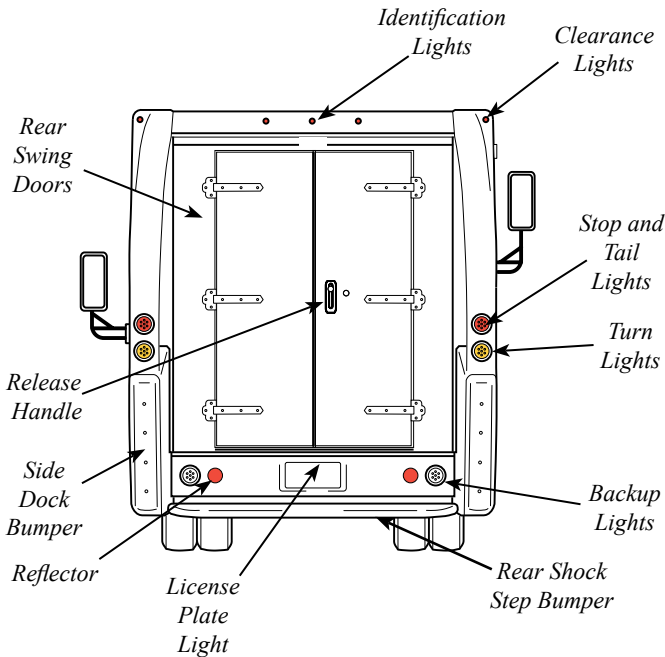
Before driving, inspect the following:

- ☐ Visually inspect the tires for possible underinflation or damage. Test tire inflation pressure with a quality pressure gauge at least weekly.
- ☐ Check wheels for cracks, damage or any missing or loose lug nuts.
- ☐ Check for signs of fluid leaks under the vehicle.
- ☐ Check the oil, antifreeze, brake, washer, and power steering fluid levels.
- ☐ Check belts and hoses for any cracking or fraying.
- ☐ Check exterior of vehicle for damage or loose parts.
- ☐ Check all doors, latches, and locks for proper operation.
- ☐ Make sure all safety equipment is present, up-to-date, and not damaged.
- ☐ Check the windshield for cracks and chips.
- ☐ Check windshield wiper operation and washer spray pattern.
- ☐ Check all lights including headlight high beams, flashers, and turn signals. Exterior lights must illuminate properly to meet Federal Motor Vehicle Safety Standards for nighttime operation.
- ☐ Adjust the driver’s seat position.
- ☐ Adjust all mirrors.
- ☐ Inspect, fasten, and adjust the seat belt.
- ☐ When starting the engine, check for warning lights on the instrument panel.
- ☐ Check the operation of the heater and defroster.
- ☐ Check all switches on the dash and the steering column for proper operation.
- ☐ Check other options and features, such as a rear-vision camera system.

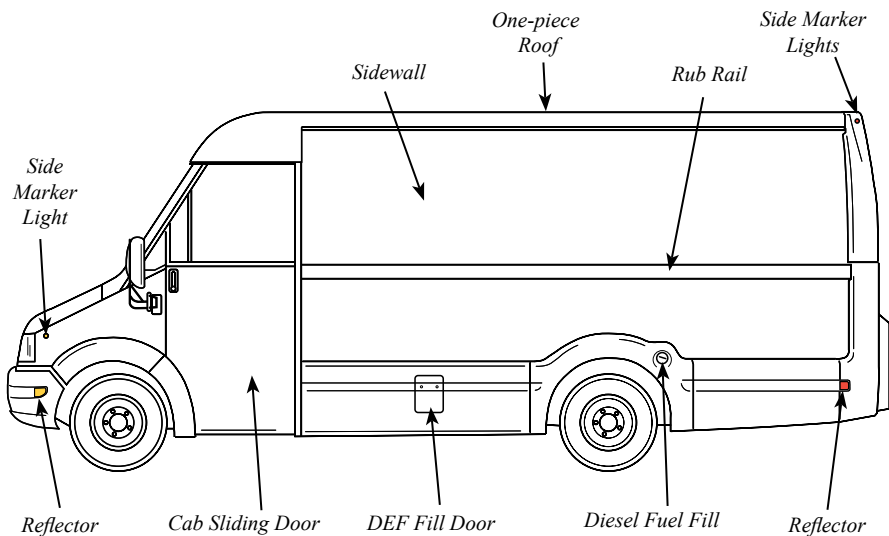
Vehicle Overview



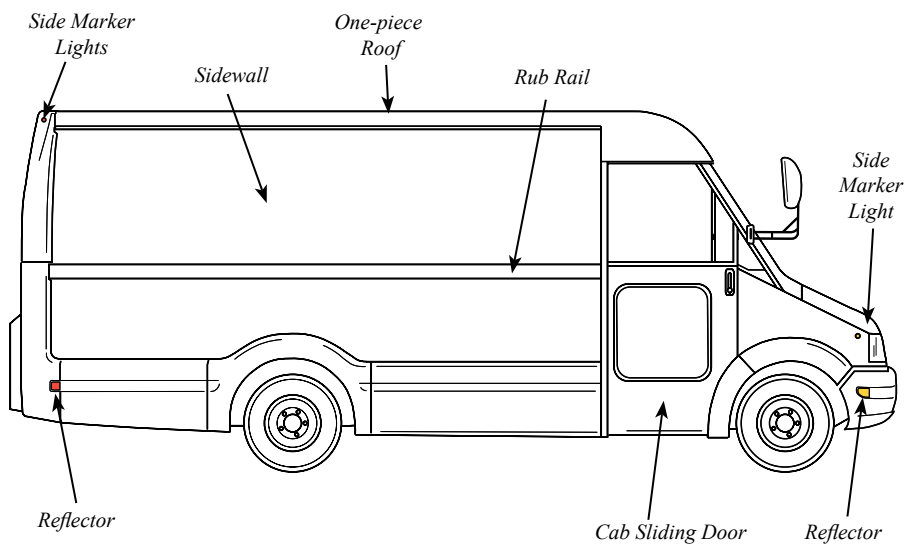
Front profile



Rear Profile



Driver's side profile



Passenger's side profile

Features and Options

This section describes the basic features and options of the Reach. This vehicle may not be equipped with all listed options. Vehicle model and installed options may determine the sections of this manual that apply. Check with the dealer for available aftermarket options and upgrades.

NOTE: The information in this document is generic. Details in illustrations and procedures may differ from those in this vehicle. Because Utilimaster manufactures many different customized vehicle packages, this document cannot list and illustrate every possible option for every vehicle. Use this information as a guideline where it applies.

Accessory Power Outlets



CAUTION: Do NOT use the accessory power outlet as a cigarette lighter.

The vehicle comes with two 12-volt accessory outlets standard. Remove the caps and insert the accessory plug of the desired device (e.g., cell phone charger, spotlight, laptop, GPS). Remember to unplug the device when not in use to prevent draining the battery. See also the *Convenience Panel*.



WARNING: Connecting unauthorized devices to the vehicle's wiring can potentially cause vehicle malfunction, damage, fire, personal injury, and/or voiding of the warranty. Contact Utilimaster before connecting any devices to the vehicle's wiring other than plugging into a supplied accessory power outlet.

Battery Access



WARNING: Batteries that are improperly connected, jumped, or charged can potentially explode and discharge acid, causing vehicle damage and personal injury. Carefully follow the chassis manufacturer's recommendations for those procedures.



WARNING: Battery posts and related accessories may contain lead and lead compounds. Wash hands after handling.



WARNING: Always wear proper protective equipment when working around batteries.

The batteries are located in the driver's side step well behind the step well access panel.

Remove the trash can, remove the four wing nuts, and pull off access panel.

Release the latch on the front of battery cover and then lift cover up and off of rear clips.

Refer to the Isuzu's NPR Stripped Chassis Owner's and Driver's Manual for information on connecting and servicing the battery.



Battery access in driver's step well

Brake Fluid Reservoir

The brake fluid reservoir is located behind the access panel just left of the steering column. The panel has a notch to view fluid levels.

Open the access panel by turning the thumb screws. Pull the left side of the panel towards the driver's door. Once the thumb screws clear the mounting bracket pull the panel away from the dash.

When replacing the access panel, align the thumb screws with the holes and push until completely closed. Turn the thumb screws to lock into position.



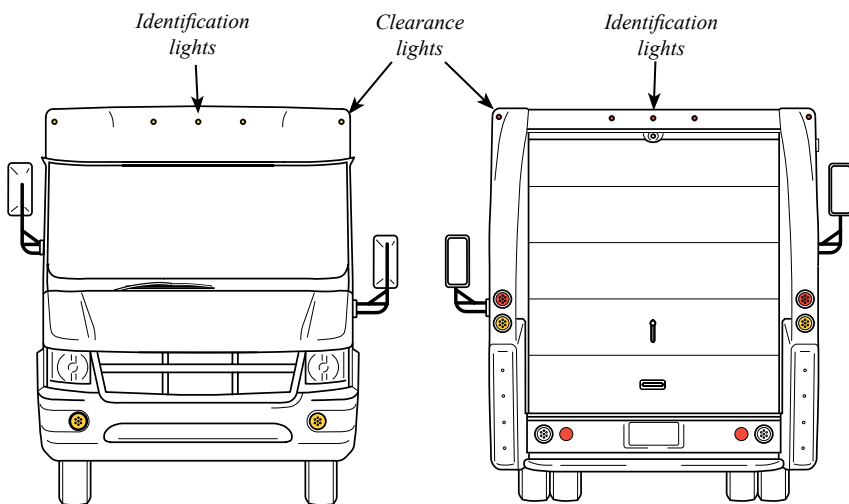
Brake fluid reservoir

Bulkhead Wall

The bulkhead wall separates the cab area from the cargo area. An optional sliding door offers increased security.

Clearance and Identification Lights

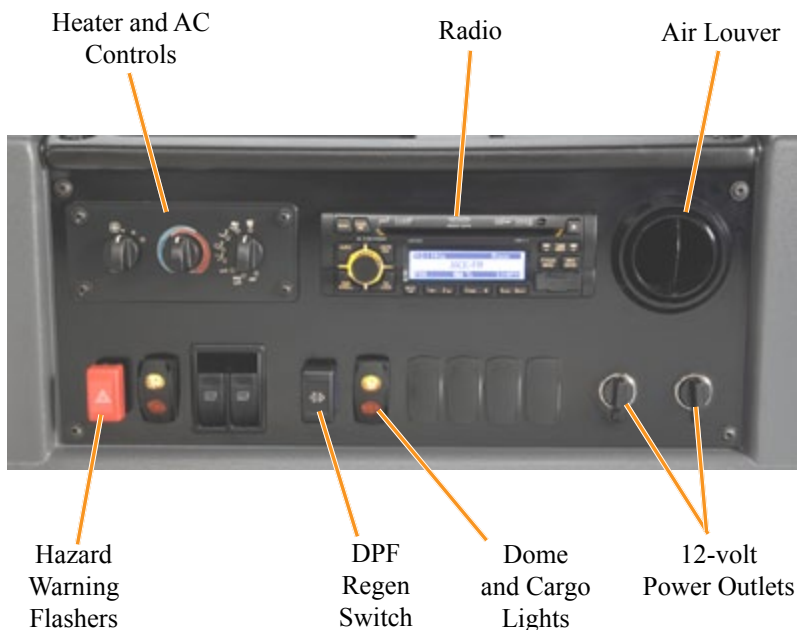
The three amber lights across the front of the vehicle and the three red lights across the back of the vehicle are the identification lights. The two outboard lights in the same line are the clearance lights.



Front and rear clearance and identification lights

Convenience Panel

The convenience panel houses the heater controls, radio/stereo, electric cab window switches, cab and cargo light switches, hazard warning flashers switch, and power accessory outlets. These items are explained separately.



Convenience Panel

NOTE: The information in this document is generic. Details may differ from those in this vehicle. Use this information as a guideline where it applies.

Diesel Emissions Fluid (DEF) Fill Access

To fill the Diesel Emissions Fluid (DEF) tank, open the access door in the side skirting behind the driver's door by flipping the release levers and pulling the top of the door away from the body.

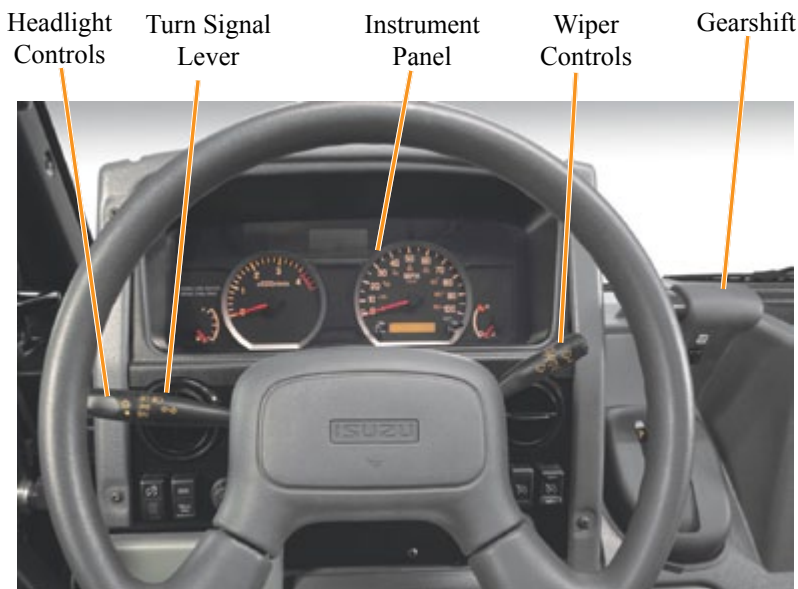
When closing the door, align the pins with the holes and push until completely closed. Flip the levers down to lock into position.



DEF fill access door

Driver's Controls

The instrument panel, gauges, switches, and steering column controls are part of the Isuzu stripped chassis. Information about these controls can be found in the NPR Stripped Chassis Owner and Driver Information Manual.

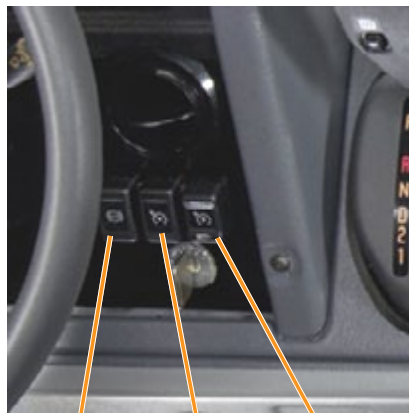


Driver's controls



IP Dimmer Switch Miles Check Switch Engine Oil Level Check Switch

Left-hand driver's controls



Exhaust Brake Switch Cruise Control Main Cruise Control Set

Right-hand driver's controls

Cruise Control

The two switches on the lower right-hand side of the steering column above the ignition switch operate the cruise control functions. See the Isuzu's NPR Stripped Chassis Owner's and Driver's Manual for more details.



WARNING: Halogen headlight bulbs operate at very high temperatures. Use gloves when handling halogen bulbs.



CAUTION: Use gloves when handling halogen bulbs. Do NOT touch the bulb with your fingers. Oil residue from fingers can greatly shorten the life of the bulb and cause it to shatter during operation. If the bulb is touched, clean the bulb with isopropyl alcohol.



CAUTION: Always replace a light with one of the same size, shape, wattage, and color.

Headlights and Parking Lights

The headlights, parking lights, and instrument panel lights are controlled by a rotary switch on the end of the turn signal lever on the left side of the steering column.

Daytime Running Lights

The headlights turn on automatically when the engine starts. They turn off when the park brake is set or when the engine is turned off. This function only includes the headlights. The parking, I.D., and running lights should be manually turned on between dusk and dawn, or anytime conditions warrant increased visibility. See the Isuzu's NPR Stripped Chassis Owner's and Driver's Manual for more details.

Turn Signals

Turn signals are controlled by the turn signal lever control on the left-hand side of the steering column. See the Isuzu's NPR Stripped Chassis Owner's and Driver's Manual for more details.

Windshield Wiper and Washer

The windshield wiper and washer are controlled by the lever on the right-hand side of the steering column.

Dome and Cargo Lights

The light switch for the cab and cargo area is in the convenience panel. The optional 3-way switch location is on the passenger's side next to the rear door. Push either the top or bottom of the switch to turn the lights on or off. See also the *Convenience Panel*.



*Option Code B13
Optional 3-way cargo light switches*



WARNING: To maintain safety and security, do NOT drive with door(s) open.

Doors

Keys

Make a spare set of all keys and keep them in a secure place. Take the key from the ignition when leaving the vehicle.

NOTE: Keys that open the doors are separate from the keys that start the engine.

NOTE: Even though some bulkhead and rear doors lock automatically when they are fully closed, you cannot become accidentally locked inside the cargo area. You can open the bulkhead and rear doors from the inside without a key.

– Optional Feature –

Bulkhead Door

The bulkhead separates the cab area from the cargo area. A sliding door allows you to enter the cargo area from the cab without having to exit the vehicle.

Cab Sliding Doors

NOTE: The cab door handle and locking options vary. Some of the most common types are described here.

To **open the locked door** from **outside the cab**, insert the key and turn 1/4 turn clockwise and allow lock to pop out, then turn key back 1/4 turn counter-clockwise and remove the key. Push on the paddle latch towards the rear of the vehicle, allowing the door to slide. The door will latch again in the fully open position.

To **open** the door from **inside the cab**, push the top of the handle toward the rear of the vehicle. The handle unlatches the door so the door can slide toward the back of the vehicle. Once the door is completely open, the latch holds the door in position.

NOTE: The door handles do NOT automatically unlock when the door is opened.

To **close** the door from inside or outside, push the top of the handle toward the front of the vehicle and slide the door forward until the latch catches.

To **lock** the doors from the **inside**, push the lever below the interior handle up.

To **unlock** the door, pull down on the lever.

NOTE: When the interior lock is engaged, the key cannot open the lock from the outside.

To **lock** the door from the **outside**, insert the key and turn clockwise and push in the lock button on the exterior handle.

NOTE: With this type of push-button lock, be careful NOT to leave the keys inside the vehicle and lock yourself out.



Exterior side door handle with push button lock



Lock

Interior side door handle and lock

Latches



WARNING: To maintain safety and security, do NOT drive with door(s) open.

There are several types of latches on various parts of the vehicle both, locking and non-locking handles.

NOTE: The cab door handle and locking options vary. Some of the most common types are described here.

Non-locking Handles

On doors with lever handle latches, push the top of the handle in the direction you wish the door to travel.

Locking Handles

To **open** the door **from the keyed side**, insert the key in the lock and turn 1/4 turn clockwise and allow the plunger to pop out, then turn 1/4 turn counter-clockwise and remove the key. Push the paddle to open the door.

To **open** the door **from the non-keyed side**, push the door latch lever and slide the door open.

To **close** the door, slide the door closed until the latch catches.

Rear Cargo Doors

Rear cargo doors come in various styles. Operation of the rear door varies by the manufacturer and the options chosen with the vehicle.

Rear Swing Doors



WARNING: Do NOT use the door as a grab handle.

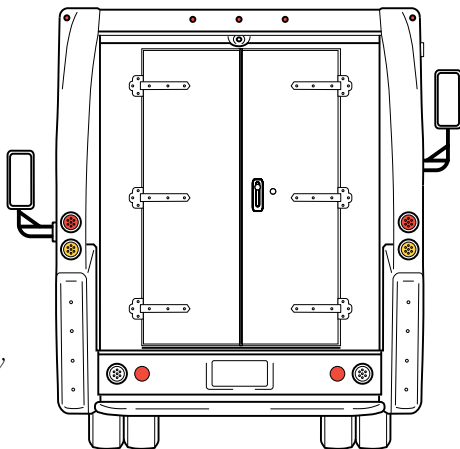
*NOTE: Because of the interlocking system, the passenger's side door **MUST** be opened first and the driver's side door **MUST** be closed first.*

To **unlock** and **open** the door from the **outside**, insert the key in the lock and turn counter-clockwise. Hold the key in place, rotate the handle counter-clockwise, and pull out. Swing the door completely open until the hold-open mechanism catches.

NOTE: The door unlocks automatically when opened from the inside.

To **open** the doors from the **inside**, first lift up the passenger's side handle and then push out. Push down on the driver's side door handle and push out. Swing the doors completely open until the hold-open mechanisms catches.

NOTE: The rear swing doors lock automatically when both doors are closed.



Rear swing doors

Rear Roll-up Door



WARNING: Do NOT use the door or pull strap as a grab handle.



WARNING: A roll up door counterbalance spring is wound under high tension. Only qualified technicians should adjust this spring.



WARNING: Failure to secure cargo will increase the risk of injury in a collision or sudden stop.



CAUTION: To prevent damage to the cargo or vehicle, be sure that the rear door is closed and latched before driving the vehicle.



WARNING: A moving door can cause injury or death. Stand clear of the opening while the door is moving.

To **unlock** the door from the **outside**, insert the key in lock and turn clockwise 1/4 turn until thumb lock pops out. Rotate key counter-clockwise 1/4 turn and remove the key from the lock.

To **open** the door from the **outside**, push down on the lower door lift handle to relieve tension on the latches, rotate the release handle clockwise until the latches release.

To **open** the door from the **inside**, push down on the door to relieve tension on latches and push the lever toward the passenger's side of vehicle until the side latches release.

To **lock** the door from the **outside**, insert the key and turn clockwise and push in on thumb lock.



*Option Code B18
Rear roll-up door
latch and grab handle*



Rear roll-up door handle

– Optional Feature –

Fire Extinguisher

A fire extinguisher may be mounted in a variety of places inside vehicle cab. Follow the manufacturer's instructions for use, inspection, and maintenance.

Fuel Fill Port



WARNING: Always replace the cap after filling.



CAUTION: Be sure to use only ultra-low sulfur diesel fuel to conform to emission regulations.

The vehicle diesel fuel fill is located just behind the driver's side rear wheel. Use only ultra-low sulfur diesel fuel. Always replace the cap after filling.



*Option Code B01
Fire extinguisher shown
below the passenger's side
handrail*



Diesel fuel fill port

Fuse Panels



CAUTION: For the swell latches to fully engage, the door panel must be closed flush with the body panel.

The fuse panels are mounted below the convenience panel behind the dash fascia. Open the access panel by turning the thumb screws. Pull the right side of the panel towards the passenger door. Once the thumb screws clear the mounting bracket pull the panel away from the dash.

When replacing the access panel, align the thumb screws with the holes and push until completely closed. Turn the thumb screws to lock into position.

The fuse panel on the left is for the Utilimaster body features, and the panel on the right is for the chassis functions.



Fuse panels behind the dash fascia



*Fuse panels
Utilimaster (left) and Isuzu (right)*

TYPE 1 CIRCUIT BREAKERS (P/N: 0310446)	20A	F12	HVAC A/C	15A	F8	ROOF ACCY SW		F4	EMPTY
	20A	F11	HVAC MAIN	15A	F7	POWER SEAT	15A	F3	PWR WDO
	30A*	F10	WIPERS	15A	F6	O/H ACCY SW		F2	EMPTY
		F9	EMPTY	10A	F5	B/U MON-RADIO		F1	EMPTY

Utilimaster body fuse locations

Hazard Light Switch

The hazard switch, located in the convenience panel, controls the flashing of exterior lights on the body. The hazard lights work even with the engine off and without the ignition key. See the Isuzu's NPR Stripped Chassis Owner's and Driver's Manual for more details. See also the *Convenience Panel*.

Heater and Air Conditioning Controls

The dash heating and cooling system is controlled by three knobs located on the convenience panel.

The left knob controls the fan speed. Turn the knob clockwise to increase the fan speed. Turn it counter-clockwise to decrease the fan speed.

The center knob controls the temperature. For warmer air turn knob clockwise (toward red). Turn the temperature control counter-clockwise (toward blue) for cooler air.

The right-mode control knob turns the system on or off, enables maximum AC, and directs the airflow to the floor louvers, dash air louvers, and the defroster outlets. The position in Max A/C will also control recirculating air. All other settings are fresh air.



Heater controls with the air conditioning option

Hood



WARNING: Always fully engage the hood support prop rod to avoid possible injury from the hood accidentally closing.

Opening the Hood

1. Pull hood release knob located to the left of the steering column.
2. Pull up on the secondary release handle under the center of the hood.
3. Lift the hood.
4. Hold the hood and release the hood prop rod from the stowed position.
5. Set the hood prop rod into the slot in the bottom of the hood.



Interior hood release

Closing the Hood

1. Lift up on the hood to release the prop rod.
2. Return the hood prop rod to its stowed position and snap into place.
2. Lower the hood, making sure it is securely engaged into the hood latch.



Secondary hood release



Hood prop rod

Logistic Track

There are three adjustable shelf tracks along each sidewall. Various cargo packages can be secured to the sidewalls using these tracks. There is a nut clip that inserts into the track, and is secured with a bolt. The bolts can be loosened and the vertical rails (studs) slid forward and backward in the cargo area to accommodate cargo requirements.

Louvers

When the fan is on, the air flow can be directed by rotating circular vents. When the heater control lever is set to defrost, most of the air flow is directed through the defrost ducts near the windshield, and only a small amount of air comes through the floor louvers. As the mode control knob is rotated, varying amounts of air will be directed through the louvers corresponding to the position of the knob and the pictures on control panel. See also the *Convenience Panel*.



Adjustable shelf tracks

Mirrors



WARNING: To prevent breakage and possible injury, do NOT push directly on the glass. Push on the mirror frames only.



WARNING: Objects in convex mirrors are closer than they may appear.

To receive maximum benefit from the outside mirrors, adjust the driver's side mirror so you can see just a small amount of the side of the vehicle. Have someone assist you by adjusting the passenger's side, and driver's side mirrors while sitting back in the driver's seat.

To adjust an exterior mirror, loosen the nut until the mirror is loose enough to turn. Grab the outside edge of the mirror and gently pull in the desired direction. Retighten the nuts.

Some exterior mirrors are convex. A convex mirror's surface is curved to increase the visible area, but use these mirrors with care, especially when changing lanes and backing up.

– Optional Feature –

Rear Vision (Backup) Camera System

The rear vision monitor is secured to the overhead console.

The camera is mounted in the rear header panel of the vehicle, below the center identification light.

Refer to the backup system's owners manual for system operation.



*Option Code B10
Rear vision monitor*

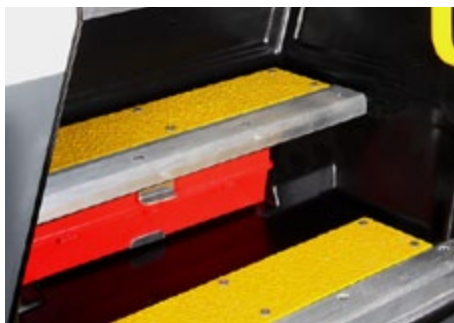


*Option Code B10
Rear backup camera*

– Optional Feature –

Reflective (Safety) Triangles

A reflective (safety) triangles kit may be mounted in the vehicle. Follow the manufacturer's and DOT instructions for use, inspection, and maintenance.



*Option Code B26
Reflector kit shown in passenger's side
step well*

Seats and Seat Belts



WARNING: Do NOT adjust the driver's seat while the vehicle is moving. The sudden movement could cause you to lose control of the vehicle.

Adjusting the Driver's seat

1. While sitting in the seat, adjust the seat height:
 - a. Slide the lever on the passenger's side of the seat.
 - b. To adjust the seat up, stand up to lift some weight off the seat.
 - c. To adjust down, apply some weight.
 - d. When seat is at desired height, release the lever.
2. While sitting in the seat, adjust the distance between the driver and the steering wheel:
 - a. Use the lever in the front center of the driver's seat. Pull the lever toward the right to unlock the seat.
 - b. Slide the seat to desired position.
 - c. Release the lever to lock the seat in position.
3. Try to move the seat with your body to make sure the seat is locked and secure.



Driver's seat adjustments up and down



Driver's seat adjustment forward and back



WARNING: To avoid personal injury or death, passengers should **NOT** ride in the cargo area. Ride only in designated seating with seat belts fastened and properly adjusted.

Passenger's Jump Seat

The bulkhead-mounted nonadjustable jump seat is located on the passenger's side. To sit on a jump seat, pull forward and down on the lower spring-loaded seat.

Using the Seat Belt

Seat Belt Overview

The driver and any passenger should wear a seat belt whenever the vehicle is moving. A seat belt provides added protection if there is a collision or if the driver suddenly has to maneuver to avoid an accident. Failure to wear a seat belt increases the risk and the severity of injury during an accident.

On pedestal and jump seats, the seat belts have webbed belts with inertia-sensitive restraints. The system is designed to lock (prevent belt travel) during sudden stops. However, the shoulder belt moves freely with the wearer during normal driving conditions. If the belt is jerked or pulled rapidly by hand, the belt may lock. If this occurs, let go of the belt and then pull it slowly and smoothly.



Jump seat



WARNING: If there is any damage to the belt or retractor, always replace the entire assembly.

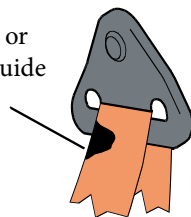
Inspecting the Seat Belt

Inspect the belt daily. Check for cuts, frays, and loose parts. Damaged parts must be replaced immediately. **Do not disassemble or modify the seat belt assembly.**

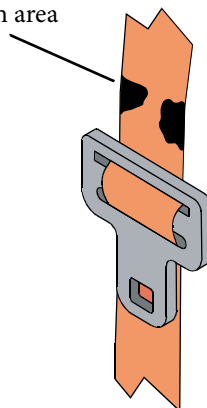
A seat belt system should be replaced immediately if it shows any problems, such as:

- Cuts, fraying, abrasion, or other wear to the seat belt webbing.
- Significant discoloration due to ultraviolet exposure.
- Significant dirt.
- Damage to the buckle, latch plate, retractor, or hardware.

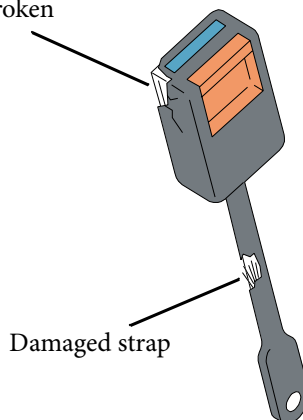
Web cut, frayed, or worn at D-Loop guide



Web cut, frayed, or worn at latch area



Buckle cracked or broken



Damaged strap

Signs of wear

Buckling the Seat Belt

This seat belt system has a retracting shoulder harness for added comfort and safety. The shoulder belt allows unrestricted movement of the torso under normal conditions, and it locks in the event of an accident.

1. After adjusting the seat (see the *Adjusting the Driver's Seat* section), sit up straight in the seat and as far back as possible.
2. With the hand nearest the outside of the vehicle, grab the latch and slide it up the webbing while pulling forward with a slow, steady motion. You should pull out enough webbing to go across your lap. If the retractor should stop the belt while you are doing this, let go of the belt and then pull more slowly and smoothly. Do **NOT** let the belt become twisted.
3. Pull the belt across your lap and push the latch into the buckle until it clicks into place. Check the belt by pulling on it to make sure the belt will hold you during a sudden stop. The lap part of the belt should be worn low and snug on the hips.
4. You may also adjust the height of the shoulder harness to fit your body. First pull down on the pillar height knob and then slide the knob up or down until you reach the desired position. Release the knob.
5. The belt should be across your chest and centered over your shoulder. The belt should be away from your face and neck, but not falling off your shoulder.

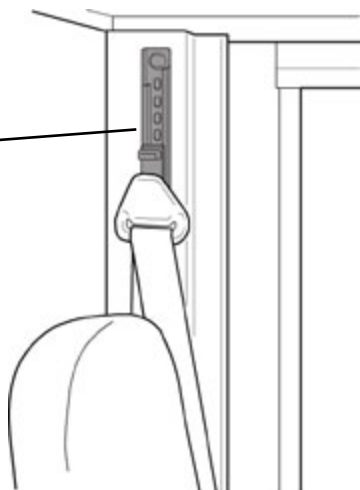


Buckling seat belt

Releasing the Seat Belt

1. Press the lap belt buckle release button and let the belt automatically retract.
2. If the belt does not retract smoothly, pull it out and check for kinks or twists.

Pillar height
adjustment lever



Seat belt pillar height adjustment lever



WARNING: The lap belt should be worn snug and low across the hips. The shoulder belt should be across your chest and centered over your shoulder. The shoulder belt should be away from your face and neck but not falling off your shoulder.

Do not wear the shoulder belt under your arm or in any position other than the one described here. Such misuse could increase the chance of severe injury in an accident.

After inserting the latch in the buckle, make sure it is locked and the belt is not twisted. A twisted belt can increase the risk of serious injury.

Stereo Radio with CD Player

The radio/stereo is mounted in the convenience panel. See the radio manufacturer's operator guide for more details about the AM/FM/CD/MP3 and Weather Band controls.

Windows

Sliding Cab Windows

To **open** the sliding cab window, squeeze the forward window latch and slide the window back.

To **close** the sliding cab window, press the rear window latch towards the glass and slide the window forward.

– Optional Feature –

Power Cab Windows

Power window switches are located on the lower left side of the convenience panel. Pull on the switch to roll up and push to lower.

NOTE: The cab doors MUST BE CLOSED for the windows to operate.

Windshield Washer Fluid

The windshield wiper and washer are controlled by the lever on the right-hand side of the steering column.

The washer fluid bottle is inside the cab dash panel by the passenger's side door handle. The panel has a notch to view the fluid level. See the Isuzu's NPR Stripped Chassis Owner's and Driver's Manual for more details.



Washer fluid reservoir

Emergency Repairs

Problems with the Reach body are unlikely to disable a vehicle enough to make it undrivable. See the NPR Stripped Chassis Owner and Driver Information Manual for emergency information.

Towing the Vehicle

- Proper equipment must be used to prevent damage to towed vehicles.
- State and local laws, related to the towing of vehicles, must be observed.
- Vehicles must not be towed at speeds in excess of 55 MPH [88km/h].
- Always attach towing equipment to main structural components. NEVER tow the vehicle by the bumpers, tow hooks, or other brackets.
- Always use towing equipment appropriately sized and designed for the expressed purpose of towing vehicles.
- Always follow the wrecker manufacturer's instructions.
- Always make sure that safety chains are used when towing and ensure that they are appropriately rated.
- The towing service must be qualified and follow contemporary industry best practices.
- A sling or draw bar lift is NOT recommended for towing the Reach vehicle.
- Loose or protruding parts of damaged vehicles should be secured prior to moving.
- Operators should refrain from going under a vehicle which is being lifted by the towing equipment unless the vehicle is adequately supported by safety stands.
- NEVER attempt a towing operation that jeopardizes the safety of the wrecker operator, bystanders, or passing motorists.

Using a Lowboy Trailer

A lowboy trailer is the preferred method for moving the Reach vehicle. Always secure the vehicle with safety chains. The height of your Reach is not suitable for a standard flatbed trailer or rollback truck.

Towing from the Front

The recommended method of towing the Reach vehicle front the front is with a front axle lift. Always use chains or straps to secure the vehicle to the axle lift. The drive shaft should be removed from the rear axle and left attached to the transmission to prevent fluid loss from the transmission. Secure the drive shaft under unit. Once the drive shaft is removed, the parking brake is inoperable. Always chock the wheels of the towed vehicle BEFORE disconnecting it to prevent it from rolling. The rear axle shaft may need to be removed if there is damage or suspicion of damage to the rear end.

Towing from the Rear

Special consideration must be taken when towing the Reach from the rear.

Towing from the rear should be avoided if at all possible. Weight transfer from lifting the rear axle can cause steering instability with the towing vehicle. Lifting of the rear can also create a situation of exceeding the front Gross Axle Weight Rating (GAWR) of the Reach vehicle especially if it is loaded.

If the rear axle of your Reach is damaged, it is recommended to use a frame lift as long as the forks are long enough to **lift vehicle from the chassis frame rails**. **Do NOT lift the vehicle by the rear bumper or frame extensions.** Frame extensions vary by truck length. Use care to ensure that the frame lift is located sufficiently forward to lift the chassis frame rails. Use height adapters to maximize the clearance between the Reach and the towing equipment. Chain the axle up on both sides prior to lifting the Reach to provide maximum wheel clearance. Always secure the vehicle with safety chains.

Flat Towing

NEVER flat tow the Reach from the rear.

Flat towing the Reach is NOT recommended, however if the circumstance requires it, use a chain and space bar specifically designed for this purpose. Do NOT flat tow front the front for more than one mile at maximum speed of 30 MPH.

Warranty Information

This LIMITED WARRANTY is issued to the original retail purchaser and is transferable to the subsequent owners of the completed vehicle during the warranty period. UTILIMASTER warrants that the **body** and any service parts supplied by Utilimaster shall be free of defects in factory materials and workmanship, under normal use and service, in accordance with and for the periods specified in the following schedule.

36 Months/Unlimited Miles

What is Covered

Body Components

All body components manufactured or installed by UTILIMASTER including moving parts, such as doors, hinges, latches, or roll-up doors, as well as lights, wiring, or other electrical equipment. Also, water leaks resulting from voids in sealants for 36 months/unlimited miles.

Body Structure

Basic body structure: front wall, bulkhead, floor, ceiling, sidewalls, and rear wall with attaching structure for 36 months/unlimited miles.

Service Parts

Service parts supplied by Utilimaster for 12 months/unlimited miles.

Start Date

The warranty begins on the date of sale to the purchaser. ANY IMPLIED WARRANTIES ARE LIMITED IN DURATION TO THE COVERAGE PERIODS OF THIS WARRANTY. (Some states do not allow limitations on how long an implied warranty lasts, so the above limitation may not apply to you.)

If you contact the selling dealer as soon as possible upon discovery of the defect, UTILIMASTER will, in the method it determines at its sole option to be necessary, repair or replace any defective parts or components covered under this warranty at its own cost and expense. Should you require additional information or assistance relating to matters covered under this warranty, it can be obtained by calling the UTILIMASTER Customer Service Department.

What is **NOT** Covered

Consequential Damage

AS THE WARRANTOR, UTILIMASTER SPECIFICALLY EXCLUDES ANY OBLIGATION FOR CONSEQUENTIAL DAMAGES OR INCIDENTAL EXPENSES FOR THE BREACH OF THIS WARRANTY OR ANY IMPLIED WARRANTY. CONSEQUENTIAL DAMAGES OR INCIDENTAL EXPENSES INCLUDE, BUT ARE NOT LIMITED TO, SUCH ITEMS AS LOSS OF USE OF THE VEHICLE, LOSS OF TIME, INCONVENIENCE, ROAD SERVICE CHARGES, TELEPHONE, TRAVEL, LODGING, AND CARGO DAMAGE OR OTHER COMMERCIAL LOSSES.

(SOME STATES DO NOT ALLOW THE EXCLUSION OR LIMITATION OF INCIDENTAL OR CONSEQUENTIAL DAMAGES, SO THE ABOVE LIMITATION OR EXCLUSION MAY NOT APPLY TO YOU.)

Other Uses

The intended use of this van body is the carrying of cargo. The van body is not designed or built for passenger occupancy, or for the hauling of cargo in excess of its gross vehicle weight rating (GVWR).

Chassis and Drive Train

The chassis and other drive train components of the Reach walk-in van are made and separately warranted by Isuzu Commercial Truck of America.

Please refer to the Isuzu NPR Stripped Chassis Warranty and Owner Assistance Information booklet for warranty coverage details.

Tires and Alignment

Damage resulting from tire failure.

Wheel alignment or damage resulting from misalignment.

Damage resulting from road hazards, lack of maintenance, tire chains misapplication, alteration, overload or vandalism.

Tires are warranted by the tire manufacturer. See separate tire warranty pamphlet.

Optional Equipment

The refrigeration unit, roof AC, 110-volt generator, or any other optional equipment, if so equipped (which are warranted separately by the manufacturer thereof.)

The refrigeration unit, roof AC, 110-volt generator, or any other optional equipment, if so equipped. These are warranted separately by the manufacturer thereof. See *Other Warranties*.

Paint and Finish

Paint finish on roll-up doors.

Minor imperfections or defects which do not materially impair or affect the fair market value of the vehicle or its suitability for its intended use.

Glass

Body glass, except for improper installation.

Alterations

Additions, alterations, or installations made by persons, including dealers, other than the manufacturer and defects arising out of or attributable to such additions, alterations, or installations without the express written consent of Utilimaster.

Normal Wear

Normal wear, usage or consumable items (e.g. light bulbs, fuses, windshield wiper blades), or conditions resulting from the failure to perform regular maintenance and care.

Abuse or Misuse

Defects attributable to abuse or misuse of the product, overloading the vehicle beyond the GVWR, or for uses for which it was not intended.

Ignored Damage or Defects

Damage resulting from failure to promptly notify and comply with the instructions of the dealer or manufacturer about defects when noted.

Batteries

Vehicle batteries are not covered.

Unauthorized Warranties

No extensions to this warranty will be allowed without prior approval.

Other Warranties

Other items or components may be covered by their own manufacturer's warranty (radio/stereo, roof mounted AC units, etc.)

THIS WARRANTY GIVES YOU SPECIFIC LEGAL RIGHTS, AND YOU MAY ALSO HAVE OTHER RIGHTS WHICH VARY FROM STATE TO STATE.

Returned Parts

Any claim received with a required returned part, that line item will be denied on the claim and must be resubmitted on a new claim with the part.

Any part returned without a claim will be destroyed after 30 days of no contact.

Sublet Work

Sublet work must have Prior Authorization before any parts are ordered or work is performed. Sublet bills will be reimbursed for the total of the bill with no dealership markup. The ORIGINAL sublet repair order must be submitted with the service facilities' repair/claim that is being submitted.

Filing Warranty Claims

If a problem on the Reach body is caused by a defect in materials or workmanship, it will be covered by our Limited Warranty.

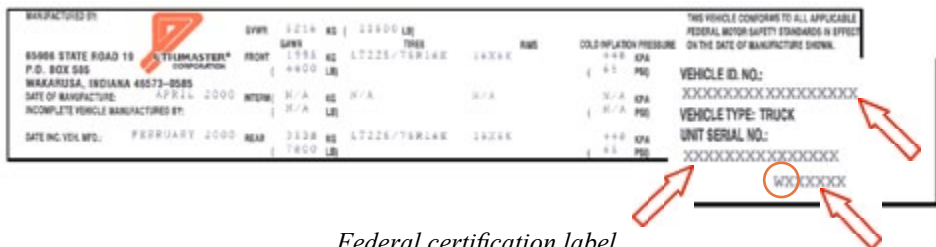
Take your vehicle to an authorized dealer for repair under warranty.

Owner's Responsibilities

- ☐ Keep warranty and service records readily available.
- ☐ Keep the vehicle clean and in good working order.
- ☐ Perform daily and periodic maintenance inspections.
- ☐ Perform routine maintenance on schedule.
- ☐ Be attentive and address any small issues before they grow into larger problems.

VIN, Body Serial, and Work Order Numbers

The 17-digit chassis **Vehicle Identification Number (VIN)** is the legal identifier for this vehicle and is the number recorded in the license plate registration. The VIN is recorded on a label attached to the bulkhead wall above the passenger's seat and on the **Federal Certification Label**. The Federal Certification Label is located on either the driver's rear door post or on the driver's door below the door latch. This label is a plastic decal (about 11" long and 2" high) that contains a variety of manufacturing information (including the **VIN** and **Work Order Number**).



Federal certification label

The 15-digit **Utilimaster Body (or Unit) Serial Number** is recorded on the **Federal Certification Label**.

The **Body Serial Number** or 7-digit **Work Order Number** can also be used to identify the body for service inquiries.



Chassis VIN tag



Federal certification label on driver's door post



Federal certification label on driver's door

Reporting Safety Defects

United States Only

If you believe that your vehicle has a defect that could cause a crash, injury, or death, you should immediately inform the National Highway Traffic Safety Administration (NHTSA), in addition to notifying Utilimaster.

If NHTSA receives similar complaints, it may open an investigation, and if it finds that a safety defect exists in a group of vehicles, it may order a recall and remedy campaign. However, NHTSA cannot become involved in individual problems between you, your dealer, or Utilimaster.

To contact NHTSA, call the Auto Safety Hotline toll free at 1-888-327-4236, write to:

**U.S. Department of Transportation
National Highway Traffic Safety Administration
Office of Defects Investigation
NVS-216, 1200 New Jersey Avenue, SE
Washington, DC 20590**

or to file a complaint online: <http://www-odi.nhtsa.dot.gov/ivoq/>

You can also obtain other information about motor vehicle safety from the Hotline.

Canada Only

If you believe that your Canadian-registered vehicle has a defect that could cause a crash, injury, or death, you should immediately inform Transport Canada, in addition to notifying Utilimaster.

To contact Transport Canada, call **800-333-0510** (or **613-993-9851** in the Ottawa region) or write to:

**Transport Canada
Motor Vehicle Defect Investigation
PO Box 8880
Ottawa, Ontario, K1G 3J2**

Maintenance Information

Maintenance Safety Considerations



WARNING: When servicing a vehicle, follow safe practices, including these recommendations:

- Always wear safety glasses and other protective equipment as appropriate to the process.
- Become familiar with all warning labels.
- Always maintain firm footing and control of tools.
- Use safety stands and/or wheel blocks whenever you are underneath the vehicle.
- Be sure that the ignition switch is Off unless otherwise required by the procedure.
- Put the transmission in Park and set the parking brake before working on the vehicle.
- Operate the engine only in a well ventilated area.
- Keep yourself and your clothing away from the radiator fan, belts, and any moving parts when the engine is running.
- Avoid contact with hot metal parts, such as the radiator or exhaust system.
- Do NOT smoke while working on the vehicle.
- Always remove rings, watches, hanging jewelry, and loose clothing before working on a vehicle. Tie long hair securely behind your head.
- Keep hands and other objects clear of the radiator fan blades. The electric fan can start at any time even though the ignition is Off. Disconnect the fan when working under the hood.
- Avoid breathing AC refrigerant and lubricant vapor or mist. Exposure may irritate eyes, nose, and throat. Utilimaster recommends that a licensed automotive air conditioning specialist work on the vehicle's air-conditioning system.

Cleaning

General Tips



WARNING: Use appropriate protective measures, such as chemical-resistant gloves and good ventilation, while using cleaning solutions on the vehicle.

Clean a stain as soon as possible before it sets in the material. If you use a foam or solvent-based cleaner, always use in a well-ventilated area and follow directions on the can.

Body Exterior



CAUTION: Do NOT power-wash for the first 90 days. Avoid harsh cleaning solutions or high-pressure washes. Do not clean in the hot sun or at elevated temperatures!

Wash and wax the body periodically to preserve the body finish.

During the winter, wash off road salts frequently.

Cargo Area



CAUTION: Commercial cleaners may damage plastic or metal surfaces.

Sweep debris from floor surface.

Instrument Panel and Interior Plastic Components



CAUTION: Do not pour water onto the surfaces.

Use a damp cloth with a mild soap and warm water to wipe down surfaces.

Seats



WARNING: Use appropriate protective measures, such as chemical-resistant gloves, while using cleaning solutions on the vehicle.

1. Gently brush or scrape excess dirt from material and vacuum to remove any loose dirt.
2. Using warm water and a clean, damp cloth, rub the stained area. Repeat application until dirt is removed.
3. If a stain persists, automotive stores can provide vinyl/leather cleaners for vinyl seats or (foam or solvent) fabric cleaners for fabric seats. Use in a well-ventilated area and follow directions on the can.

Keep seat belts clean and dry.

Windows

Tempered and Safety Glass



CAUTION: Do NOT use razor blades or other sharp objects that could score the glass! Do NOT clean in the hot sun or at elevated temperatures!



CAUTION: In the winter, establish adequate visibility by clearing ice from windows **BEFORE** driving the vehicle. Do NOT use an open flame to melt ice on windows or any other part of the vehicle body.

Wash windows with a mild soap or detergent, using a clean sponge or soft cloth. Rinse well with clean water. To prevent water spots, dry with a chamois or moist cellulose sponge.

Fresh paint, grease, and smeared glazing compounds can be removed easily before drying by rubbing lightly with a grade VM&P naphtha or isopropyl alcohol. Naphtha also works to remove labels and stickers. Butyl cellosolve works well for removal of dried paints and marking pen inks. After using any of these chemicals, do a final wash with warm water and a mild soap or detergent, then rinse thoroughly with clean water.

Engine and Heater Coolant



CAUTION: Any time the engine and heater coolant system is opened, it must be refilled using a vacuum system.



CAUTION: To avoid possible heater or engine damage, use only engine coolant recommended by the chassis manufacturer.

Lubrication

The engine is not the only part of the vehicle that needs lubrication. Hinges, latches, seals, and locks also require occasional lubrication. See the following *Maintenance Checklist* section and the Reach Body Service Manual for details on lubrication.

Manufacturers' Recommendations

Safety and application instructions provided with sealants, cleaners, and equipment should always supersede information provided by Utilimaster.

Maintenance Checklist

By design, the Reach body is low-maintenance. However, Utilimaster recommends the items on the following pages should be **checked every three to four months**, unless otherwise stated.

For more detailed service instructions, see the Reach Body Service Manual.

The daily inspection checklist should be included with every periodic inspection. See the “*Before You Go*” *Operation Inspection* section.

Body Mounting Fasteners

- ☐ Check for loose fasteners underneath the chassis, particularly the bolts that mount the body to the chassis on the outside of the riser, on either side of the chassis rails, and the bolts on the cross member.

Bumpers

- ☐ Check for loose bolts on the bumper and brackets.
- ☐ Check for damaged or bent components.
- ☐ Lubricate rear shock absorbing bumper fittings with #2 grease (one shot from a hand pump every three to six months, dependent on use and conditions).



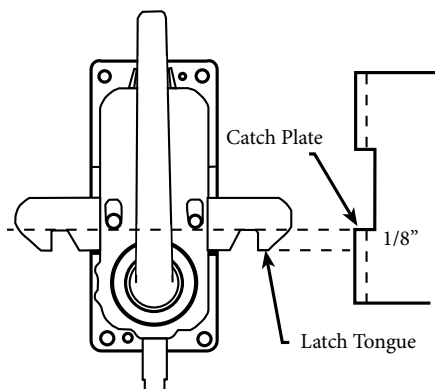
Rear shock-absorbing bumper



Rear bumper grease fittings

Doors, General

- ☐ Check operation of the door locks at each door from both the inside and outside.
- ☐ Lubricate the lock cylinders with a lightweight oil.
- ☐ Check that interior and exterior handles are securely mounted.
- ☐ Check the alignment of latches and catch-plates. At least 1/8" of the door handle latch tongue needs to engage the catch plate.
- ☐ Check for wear on the catch plates and latch tongue.
- ☐ Inspect and clean rubber seals around door edges.
- ☐ Check operation of the windows.



Check latch and catch alignment

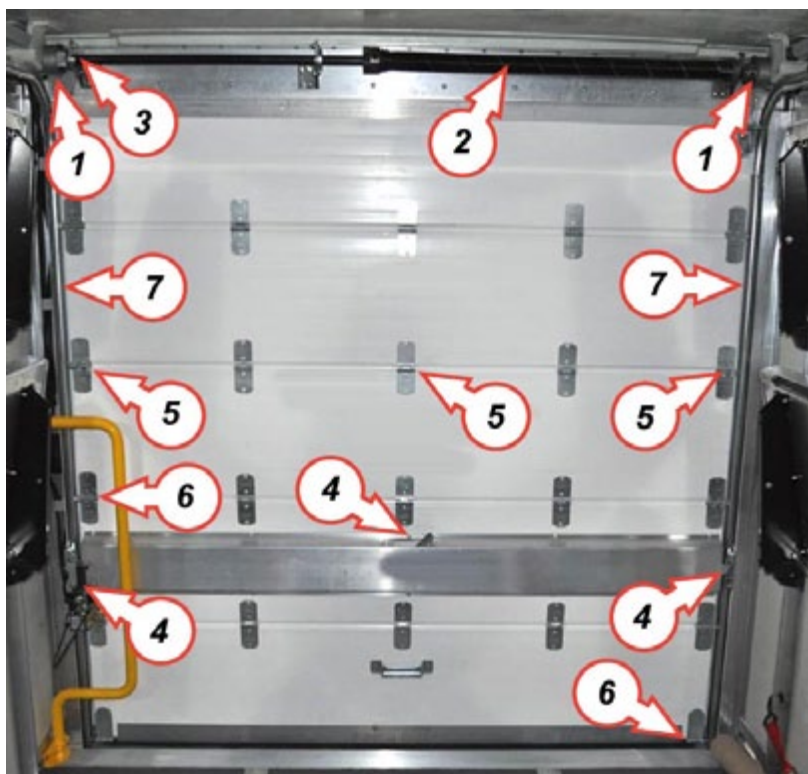
Doors, Roll-up



CAUTION: Do NOT use grease on roll-up doors. Do NOT get oil on rubber seals. Wipe up any drips immediately.

Check the condition of the door and components:

- ☐ Check that the door opens easily and closes tightly.
- ☐ Check the condition of the pull-down strap for fraying or wear.
- ☐ Check the condition of the latches.
- ☐ Check for loose fasteners or components.
- ☐ Check that the rear door is centered in the opening.



*Option Code B18
Lubrication points on rear roll-up door*

Lubricate the following rear roll-up door parts with a light oil (Utilmaster P/N 04202540, or equivalent).

- ☐ Roller drums and shafts—wipe off excess oil (#1 and #3).
- ☐ Springs—lubricate both springs along their entire length to prevent rusting (#2).
- ☐ Latches and lock levers (#4).
- ☐ All hinges—wipe off excess oil (#5).
- ☐ Rollers (#6).
- ☐ Clean and lubricate track (#7).

Driver Conveniences

- ☐ Check the heating and air conditioning controls for proper operation.
- ☐ Check all dash controls for proper operation.

Grab Handles and Handrails

- ☐ Check that all grab handles and handrails are securely mounted.

Hood

- ☐ Check the hood catches for alignment and excessive wear.
- ☐ Check the hood prop rod for proper operation.

Mirrors

- ☐ Check tightness of the mirror mounting bolts.
- ☐ Check that the mirror arms securely lock into the detents.

Reflective Tape

- ☐ Check that all reflective tape is securely attached.

Seats and Belts

- ☐ Check tightness of the bolts for the seat belt and pedestal.
- ☐ Check the seat belt for proper operation and signs of fraying or wear.

Tires

- ☐ Check pressure and condition of tires **weekly**.

Wipers

- ☐ Check tightness of the wiper linkage connections.
- ☐ Check the condition of the wiper blades.

More Information

For more information about available warranties, replacement parts and accessories contact your local Isuzu dealer.

Reach Customer Service

Toll Free 866-441-9638

Email: reach@utilimaster.com

A

- Access, battery 12
- Accessory power outlets 14
- Address
 - National Highway Traffic Safety Administration 41
 - Transport Canada 41
- Air conditioning
 - Controls 14, 24
 - Safety 42

B

- Backup (rear vision) camera system 27
- Batteries 12, 38
- Body mounting bolts 46
- Body serial number 40
- Brake fluid 13
- Brakes 8
- Bulkhead 13, 18
- Bumpers 46

C

- Camera, rear vision 8, 27
- Cargo area, cleaning 43
- Cautions and warnings 7
- Cleaning
 - Cargo area 43
 - General tips 43
 - Interior plastic components 43
 - Seats 44
- Controls, driver 15
- Convenience panel 14
- Coolant, engine and heater 45
- Cruise control switches 15, 16
- Customer service 2, 50

D

- Daytime running lights 16
- Decals 49
- DEF fill 10, 15
- Doors
 - Bulkhead 13, 18
 - Cab side sliding 10, 18
 - Keys 17
 - Latches 8, 19
 - Locks 8, 19, 21, 33, 47
 - Maintenance 8, 47
 - Rear swing 9, 20
 - Roll-up 9, 20, 21, 47
- DPF regen switch 14
- Driver's
 - Controls 15
 - Conveniences 49
 - Seat 28

E

- Emergency flashers 8
- Emergency repairs 34
- Engine coolant 45
- Exhaust brake switch 16

F

- Features 11
- Federal Certification Label 40
- Fire extinguisher 22
- Flashers, hazard 8, 14, 24
- Forklift 7
- Fuel fill 10, 22
- Fuse panels 23

G

- Gearshift 15
- Glass 38, 44
- Grab handles 49

H

Handrail 49
Hazard flashers 14, 24
Headlights 8, 9, 15, 16
Heater controls 8, 14, 24
Hood 25, 49

I

Identification and clearance lights 9, 13
Instrument panel 8, 15, 43
Introduction 2
Isuzu chassis 15

J

Jump seat 29

K

Keys 17

L

Lights
 Backup 9
 Brake 9, 12
 Cargo 14, 17
 Checking 8
 Daytime running 16
 Dome 14, 17
 Hazard 14, 24
 Headlights 9, 15, 16
 Identification and clearance lights 9, 13
 Parking 9, 16
 Turn 9, 15, 17
Locks. *See* Doors
Logistic track 26
Louvers 14
Lubricants 8, 45, 47

M

Maintenance
 Bumpers 46
 Checklist 46
 Cleaning 43
 Doors 47
 Grab handles 49
 Heater 8
 Lubrication 46, 47
 Mirrors 49
 Reflective tape 49
 Seats and seat belts 8, 28, 30, 49
 Switches 49
 Wipers 49
Miles check switch 16
Mirrors 8, 26, 49
More information and publications 50

N

Notes, cautions, and warnings 7
Numbers
 Body serial number 40
 Unit serial number 40
 VIN 40
 Work order number 40

O

Oil 8, 47
Options 11
Orientation, vehicle 7
Owner's responsibilities 39

P

Paint 38, 43
Parking and running lights 9, 16
Phone numbers
 NHTSA 41
 Transport Canada 41
 Utilimaster 2, 50
Pillar height adjustment 32
Power outlets 11, 14
Power steering fluid 8
Prop rod, hood 25
Pull strap, roll-up door 47

R

Radio 14, 33
Rear vision camera 8, 27
Reflective (safety) triangles 27
Reflective tape 9, 10, 49
Regen switch 14
Revision control 54
Roll-up door 21, 48
Rub rail 10

S

Safety
 Belts. *See* Seat belts
 Considerations 41, 42
 Defect reporting 41
 Equipment 8, 18, 22, 27
 Glass 44
 Practices 42
 Triangles 27
 Warnings 7
Seals, door 47
Seat adjustment 8, 28, 32
Seat belts 8, 28, 31, 32, 49
 Maintenance 8, 49
 Operation 28, 29, 31
Seat, jump 29
Serial number 40
Sliding cab windows 33
Stereo 33
Switches 8, 49

T

Tape, reflective 49
Tempered glass 44
Tires 8, 37, 49
Towing the vehicle 34
Triangles, safety 27
Turn signals 8

U

Unit serial number 40
Utilimaster body serial number 40
Utilimaster warranty information 36

V

Vehicle overview 9
VIN (Vehicle Identification Number) 40

W

Warnings and cautions 7
Warranty claims 39
Warranty information 36
Wheels 8
Windows
 Cab 8, 9, 33
 Safety glass 44
 Sliding cab 33
 Tempered 44
Windshield washer fluid 33
Wipers 8, 15, 17, 33, 49
Work order number 40

Revision Control

Revision A	September 2011
Revision B	October 2011
Revision C	March 2012

The latest updates and other information about Utilimaster products, parts, service, and warranty are available for viewing and downloading at Utilimaster's web site www.utilimaster.com.

Important Notices

© 2012, Utilimaster.® Printed in U.S.A.

Title: *Reach—Body Operator's Guide*

Utilimaster Corporation attempts to provide information that is accurate, complete, and useful. All information contained in this manual is based on the latest product information available at the time of publication. However, because of the Utilimaster policy of continual product improvement, Utilimaster reserves the right to amend the information in this document at any time without prior notice.

This material is confidential and the property of Utilimaster. It is shared with you for the sole purpose of helping you with the operation of the described equipment.

Utilimaster makes no warranty of any kind with regard to this material, including, but not limited to, the implied warranties of merchantability and fitness for a particular purpose. Utilimaster shall not be liable for errors contained herein or for incidental or consequential damages in connection with the furnishing, performance, or use of this material.

Utilimaster expressly disclaims all responsibility and liability for the installation, use, performance, maintenance, and support of third-party products. Customers are advised to make their independent evaluation of such products.

No part of this document may be photocopied, reproduced, or translated to another language without the prior written consent of Utilimaster.

Utilimaster® and Reach™ are trademarks of Utilimaster Corporation. All other products or name brands mentioned in this document are trademarks of their respective owners.

**Do not discard! This document contains important
operation, safety, and maintenance information!**

Reach Customer Service
Toll Free 866-441-9638

Email: reach@utilimaster.com