



# Utilimaster - Mitsubishi Trademaster Utility Body

## Ideal Work Body for:

Home Construction  
General Contracting  
HVAC Contractors

Landscapers  
Locksmiths  
Plumbers

Pool Maintenance  
Electricians  
Carpenters



*12' Trademaster shown with optional Ladder Racks*

## **Standard Body Specifications:**

Available on the Mitsubishi (Model?) Chassis  
90" Exterior Body Width  
Twin Rear Swing Doors  
Heavy Duty Slamlock Rear Door Hardware  
Pooched Rear Bumper  
FRP Sidewalls  
Stainless Steel Heavy-Duty Compartment Handles  
Heavy-Duty Aluminum Hinges with Zerk Fittings  
Interior Weldon Cargo Light  
12" Aluminum Radius with Cast Corners  
5" Radius Front Corner Posts  
Grab Handles on Rear

## **Utilimaster Mud Flaps**

1-1/8" Plywood Flat Floor with Anti-Slip Surface  
Complete Body Undercoating

## **Side Compartments:**

**12' Body (8 compartments total)**

(4) Vertical - 19.5"W x 41.5"H

(4) Horizontal - 37"W x 17.5"H

**14' Body (10 compartments total)**

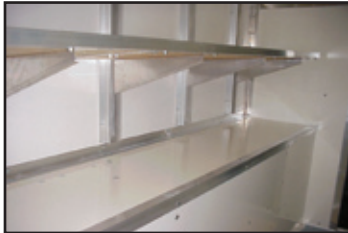
(4) Vertical - 19.5"W x 41.5"H

(2) Vertical - 17.5" W x 41.5"H

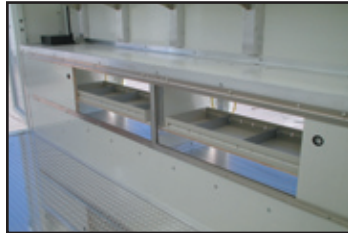
(4) Horizontal - 37"W x 17.5"H



# Trademaster Options and Dimensions



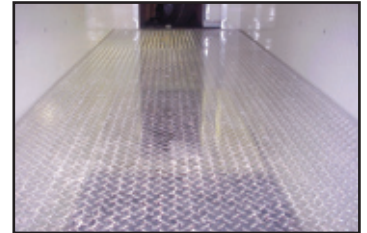
Interior Shelving Packages



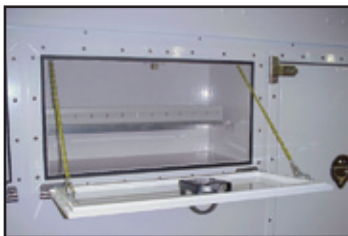
Interior Access to Compartments



Translucent Roof



Aluminum Tread Plate Floor



Compartment Shelving Packages



Rear Access Ladder and Racks



Rear Hatch Door



Compartment Locking System

*Additional Options Available, Option Appearance and Availability May Vary by Chassis Type*

Rear Wheels	Body Size	Outside Width	Wheel Base	Overall Height	Interior Width at Floor	Interior Length	Interior Height	Rear Door Opening Width	Rear Door Opening Height
Dual	12'	90"	114.6"	116"	49"	152"	78"	50"	68"
Dual	14'	90"	134.3"	116"	49"	176"	78"	50"	68"

*All chassis require the 40 gallon aft fuel tank*

### TRADEMASTER WARRANTY

The Trademaster under normal use and service is warranted for the following time periods:

**Body Structure - 36 months or 36,000 miles**

**Body Components manufactured or installed by Utilimaster - 12 months or 12,000 miles**

**For more information, contact Utilimaster or your authorized Mitsubishi Dealer:**

**Utilimaster Corporation**  
**65906 State Road 19 • P.O. Box 585 • Wakarusa, IN 46573**  
**Toll Free: 800-582-3454 • Web: [www.utilimaster.com](http://www.utilimaster.com)**