



# Utilimaster - Hino Trademaster Utility Body

## Ideal Work Body for:

Home Construction

Landscapers

Pool Maintenance

General Contracting

Locksmiths

Electricians

HVAC Contractors

Plumbers

Carpenters



*14' Trademaster shown with optional Ladder Racks, and Dealer-Installed Chrome Enhancement Package*

## Standard Body Specifications:

Available on the Hino 145 or Hino 165 Chassis

96" Exterior Body Width

Twin Rear Swing Doors

Heavy Duty Slamlock Rear Door Hardware

Pooched Rear Bumper

FRP Sidewalls

Stainless Steel Heavy-Duty Compartment Handles

Heavy-Duty Aluminum Hinges with Zerk Fittings

Interior Weldon Cargo Light

12" Aluminum Radius with Cast Corners

5" Radius Front Corner Posts

Grab Handles on Rear

## Utilimaster Mud Flaps

1-1/8" Plywood Flat Floor with Anti-Slip Surface

Complete Body Undercoating

## Side Compartments:

12' Body (8 compartments total)

(4) Vertical - 19.5"W x 41.5"H

(4) Horizontal - 37"W x 17.5"H

14' Body (10 compartments total)

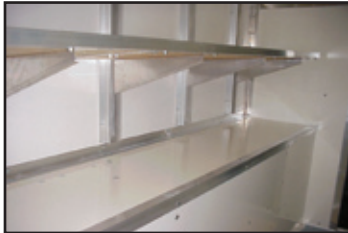
(4) Vertical - 19.5"W x 41.5"H

(2) Vertical - 17.5" W x 41.5"H

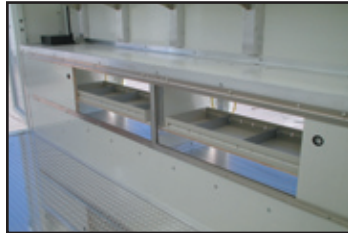
(4) Horizontal - 37"W x 17.5"H



# Trademaster Options and Dimensions



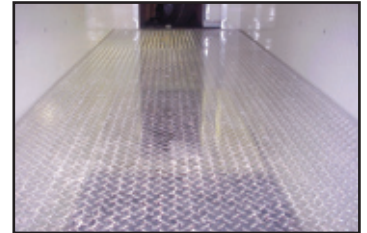
Interior Shelving Packages



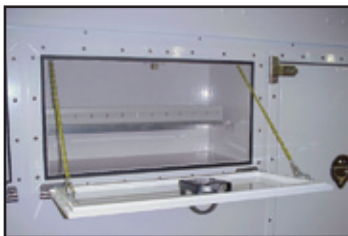
Interior Access to Compartments



Translucent Roof



Aluminum Tread Plate Floor



Compartment Shelving Packages



Rear Access Ladder and Racks



Rear Hatch Door



Compartment Locking System

*Additional Options Available, Option Appearance and Availability May Vary by Chassis Type*

| Rear Wheels | Body Size | Outside Width | Wheel Base | Overall Height | Interior Width at Floor | Interior Length | Interior Height | Rear Door Opening Width | Rear Door Opening Height |
|-------------|-----------|---------------|------------|----------------|-------------------------|-----------------|-----------------|-------------------------|--------------------------|
| Dual        | 12'       | 96"           | 147" F     | 115"           | 49"                     | 152"            | 78"             | 50"                     | 68"                      |
| Dual        | 14'       | 96"           | 169" J     | 115"           | 49"                     | 176"            | 78"             | 50"                     | 68"                      |

### TRADEMASTER WARRANTY

The Trademaster under normal use and service is warranted for the following time periods:

**Body Structure - 36 months or 36,000 miles**

**Body Components manufactured or installed by Utilimaster - 12 months or 12,000 miles**

For more information, contact Utilimaster or your authorized Hino Dealer:



**Utilimaster Corporation**  
**65906 State Road 19 • P.O. Box 585 • Wakarusa, IN 46573**  
**Toll Free: 800-582-3454 • Web: [www.utilimaster.com](http://www.utilimaster.com)**